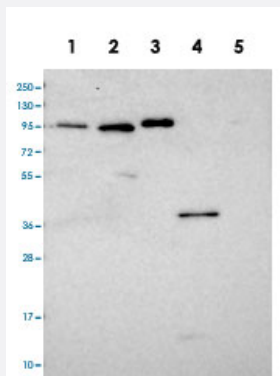


CCDC19 polyclonal antibody

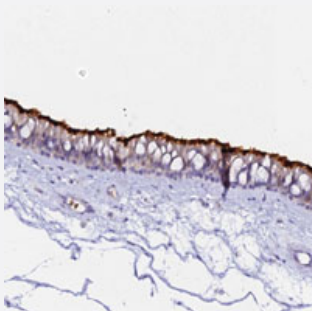
Catalog # PAB28144 Size 100 uL

Applications



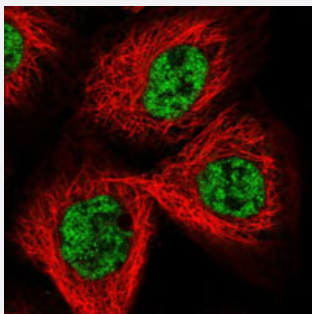
Western Blot

Western blot analysis of Lane 1: RT-4, Lane 2: U-251 MG, Lane 3: Human Plasma, Lane 4: Liver, Lane 5: Tonsil with CCDC19 polyclonal antibody (Cat # PAB28144) at 1:100-1:250 dilution.



Immunohistochemistry (Formalin/PFA-fixed paraffin-embedded sections)

Immunohistochemical staining of human nasopharynx with CCDC19 polyclonal antibody (Cat # PAB28144) shows strong positivity in cilia of respiratory epithelial cells at 1:200-1:500 dilution.



Immunofluorescence

Immunofluorescent staining of human cell line A-431 with CCDC19 polyclonal antibody (Cat # PAB28144) at 1-4 ug/mL dilution shows positivity in nucleus but not nucleoli.

Specification

Product Description

Rabbit polyclonal antibody raised against recombinant CCDC19.

Immunogen	Recombinant protein corresponding to amino acids of recombinant CCDC19.
Sequence	KEATMDAVMTRKKIMKQKEMVWNNNKKLSDLEEVAKERAQNLLQRANKLRMEQEEELKDMSKII LNAKCHAIRDAQILEKQKI
Host	Rabbit
Reactivity	Human
Form	Liquid
Purification	Antigen affinity purification
Isotype	IgG
Recommend Usage	Immunohistochemistry (1:200-1:500) Western Blot (1:100-1:250) Immunofluorescence (1-4 ug/mL) The optimal working dilution should be determined by the end user.
Storage Buffer	In PBS, pH 7.2 (40% glycerol, 0.02% sodium azide)
Storage Instruction	Store at 4°C. For long term storage store at -20°C. Aliquot to avoid repeated freezing and thawing.
Note	This product contains sodium azide: a POISONOUS AND HAZARDOUS SUBSTANCE which should be handled by trained staff only.

Applications

- Western Blot

Western blot analysis of Lane 1: RT-4, Lane 2: U-251 MG, Lane 3: Human Plasma, Lane 4: Liver, Lane 5: Tonsil with CCDC19 polyclonal antibody (Cat # PAB28144) at 1:100-1:250 dilution.

- Immunohistochemistry (Formalin/PFA-fixed paraffin-embedded sections)

Immunohistochemical staining of human nasopharynx with CCDC19 polyclonal antibody (Cat # PAB28144) shows strong positivity in cilia of respiratory epithelial cells at 1:200-1:500 dilution.

- Immunofluorescence

Immunofluorescent staining of human cell line A-431 with CCDC19 polyclonal antibody (Cat # PAB28144) at 1-4 ug/mL dilution shows positivity in nucleus but not nucleoli.

Gene Info — CCDC19

Entrez GeneID

[25790](#)

Protein Accession#	Q9UL16
Gene Name	CCDC19
Gene Alias	NESG1
Gene Description	coiled-coil domain containing 19
Omim ID	605152
Gene Ontology	Hyperlink
Other Designations	OTTHUMP00000033461 nasopharyngeal epithelium specific protein 1 nasopharyngeal epithelium specific protein 1 (NESG1)