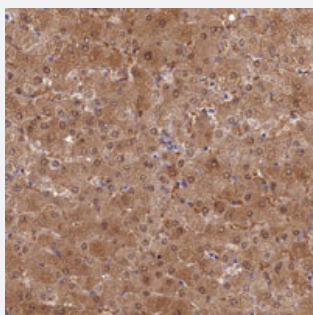


# SLC25A41 polyclonal antibody

Catalog # PAB28136      Size 100 uL

## Applications



### Immunohistochemistry (Formalin/PFA-fixed paraffin-embedded sections)

Immunohistochemical staining of human liver with SLC25A41 polyclonal antibody (Cat # PAB28136) shows moderate cytoplasmic and nuclear positivity in hepatocytes at 1:50-1:200 dilution.

## Specification

<b>Product Description</b>	Rabbit polyclonal antibody raised against recombinant SLC25A41.
<b>Immunogen</b>	Recombinant protein corresponding to amino acids of recombinant SLC25A41.
<b>Sequence</b>	AQDTVEGSNPTMRGVLQRILAQGGWLGLYRG
<b>Host</b>	Rabbit
<b>Reactivity</b>	Human
<b>Form</b>	Liquid
<b>Purification</b>	Antigen affinity purification
<b>Isotype</b>	IgG
<b>Recommend Usage</b>	Immunohistochemistry (1:50-1:200) The optimal working dilution should be determined by the end user.
<b>Storage Buffer</b>	In PBS, pH 7.2 (40% glycerol, 0.02% sodium azide)
<b>Storage Instruction</b>	Store at 4°C. For long term storage store at -20°C. Aliquot to avoid repeated freezing and thawing.

**Note**

This product contains sodium azide: a POISONOUS AND HAZARDOUS SUBSTANCE which should be handled by trained staff only.

## Applications

- Immunohistochemistry (Formalin/PFA-fixed paraffin-embedded sections)

Immunohistochemical staining of human liver with SLC25A41 polyclonal antibody (Cat # PAB28136) shows moderate cytoplasmic and nuclear positivity in hepatocytes at 1:50-1:200 dilution.

## Gene Info — SLC25A41

Entrez GeneID	<a href="#">284427</a>
Protein Accession#	<a href="#">Q8N5S1</a>
Gene Name	SLC25A41
Gene Alias	FLJ40442, MGC34725
Gene Description	solute carrier family 25, member 41
Omim ID	<a href="#">610822</a>
Gene Ontology	<a href="#">Hyperlink</a>
Gene Summary	SLC25A41 belongs to the SLC25 family of mitochondrial carrier proteins (Haitina et al., 2006 [PubMed 16949250]).[supplied by OMIM]
Other Designations	-