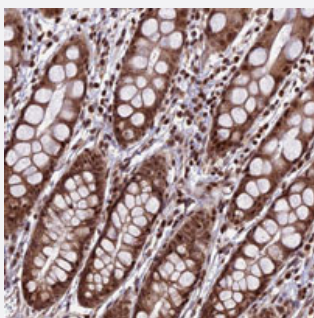


CIB3 polyclonal antibody

Catalog # PAB28132 Size 100 uL

Applications



Immunohistochemistry (Formalin/PFA-fixed paraffin-embedded sections)

Immunohistochemical staining of human rectum with CIB3 polyclonal antibody (Cat # PAB28132) shows moderate cytoplasmic and nuclear positivity in glandular cells at 1:20-1:50 dilution.

Specification

Product Description	Rabbit polyclonal antibody raised against recombinant CIB3.
Immunogen	Recombinant protein corresponding to amino acids of recombinant CIB3.
Sequence	FNDDYICAWDLEQTVTKLTRGGLSAEEVSLVCEKVLDEADG
Host	Rabbit
Reactivity	Human
Form	Liquid
Purification	Antigen affinity purification
Isotype	IgG
Recommend Usage	Immunohistochemistry (1:20-1:50) The optimal working dilution should be determined by the end user.
Storage Buffer	In PBS, pH 7.2 (40% glycerol, 0.02% sodium azide)
Storage Instruction	Store at 4°C. For long term storage store at -20°C. Aliquot to avoid repeated freezing and thawing.

Note

This product contains sodium azide: a POISONOUS AND HAZARDOUS SUBSTANCE which should be handled by trained staff only.

Applications

- Immunohistochemistry (Formalin/PFA-fixed paraffin-embedded sections)

Immunohistochemical staining of human rectum with CIB3 polyclonal antibody (Cat # PAB28132) shows moderate cytoplasmic and nuclear positivity in glandular cells at 1:20-1:50 dilution.

Gene Info — CIB3

Entrez GeneID [117286](#)

Protein Accession# [Q96Q77](#)

Gene Name CIB3

Gene Alias KIP3, MGC138405, MGC142151, MGC96922

Gene Description calcium and integrin binding family member 3

Omim ID [610645](#)

Gene Ontology [Hyperlink](#)

Gene Summary This gene product shares a high degree of sequence similarity with DNA-dependent protein kinase catalytic subunit-interacting protein 2 in human and mouse, and like them may bind the catalytic subunit of DNA-dependent protein kinases. The exact function of this gene is not known. [provided by RefSeq]

Other Designations DNA-dependent protein kinase catalytic subunit-interacting protein 3

Disease

- [Kidney Failure](#)