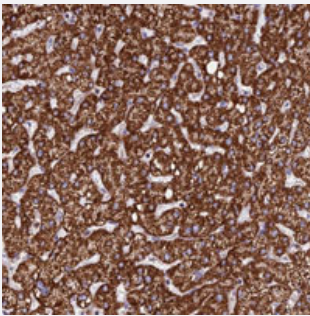


PPP1R12C polyclonal antibody

Catalog # PAB28130 Size 100 uL

Applications



Immunohistochemistry (Formalin/PFA-fixed paraffin-embedded sections)

Immunohistochemical staining of human liver with PPP1R12C polyclonal antibody (Cat # PAB28130) shows strong cytoplasmic positivity in hepatocytes.

Specification

Product Description	Rabbit polyclonal antibody raised against recombinant PPP1R12C.
Immunogen	Recombinant protein corresponding to amino acids of recombinant PPP1R12C.
Sequence	DIARYLLSHGANIAAVNSDGLPLDLAESDAMEGLLKAEIARRGVDVEAAKRAEEELLHDTTCW LNGGAMPEARHPRTGASALHV
Host	Rabbit
Reactivity	Human
Form	Liquid
Purification	Antigen affinity purification
Isotype	IgG
Recommend Usage	Immunohistochemistry (1:1000-1:2500) The optimal working dilution should be determined by the end user.
Storage Buffer	In PBS, pH 7.2 (40% glycerol, 0.02% sodium azide)

Storage Instruction

Store at 4°C. For long term storage store at -20°C.
Aliquot to avoid repeated freezing and thawing.

Note

This product contains sodium azide: a POISONOUS AND HAZARDOUS SUBSTANCE which should be handled by trained staff only.

Applications

- Immunohistochemistry (Formalin/PFA-fixed paraffin-embedded sections)

Immunohistochemical staining of human liver with PPP1R12C polyclonal antibody (Cat # PAB28130) shows strong cytoplasmic positivity in hepatocytes.

Gene Info — PPP1R12C

Entrez GeneID[54776](#)**Protein Accession#**[Q9BZL4](#)**Gene Name**

PPP1R12C

Gene Alias

DKFZp434D0412, LENG3, p84

Gene Description

protein phosphatase 1, regulatory (inhibitor) subunit 12C

Gene Ontology[Hyperlink](#)**Gene Summary**

O

Other Designations

leukocyte receptor cluster (LRC) encoded novel gene 3|leukocyte receptor cluster (LRC) member 3|myosin-binding subunit 85|protein phosphatase 1, regulatory subunit 12C