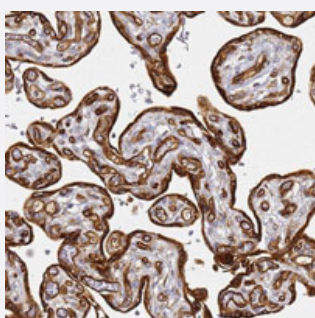


KIF7 polyclonal antibody

Catalog # PAB28106 Size 100 uL

Applications



Immunohistochemistry (Formalin/PFA-fixed paraffin-embedded sections)

Immunohistochemical staining of human placenta with KIF7 polyclonal antibody (Cat # PAB28106) shows strong cytoplasmic positivity in trophoblastic cells at 1:500-1:1000 dilution.

Specification

Product Description	Rabbit polyclonal antibody raised against recombinant KIF7.
Immunogen	Recombinant protein corresponding to amino acids of recombinant KIF7.
Sequence	MWINQELKQKLGGVNAVGHSRGGEKRS LCSEGRQAPGNEDELHLAPELLWLSPLTEGAPRTRE ETRDLVHAPLPLTWKRSSLCGEEQGSPEELRQREAAEPLVGRVLPVGE
Host	Rabbit
Reactivity	Human
Form	Liquid
Purification	Antigen affinity purification
Isotype	IgG
Recommend Usage	Immunohistochemistry (1:500-1:1000) The optimal working dilution should be determined by the end user.
Storage Buffer	In PBS, pH 7.2 (40% glycerol, 0.02% sodium azide)

Storage Instruction

Store at 4°C. For long term storage store at -20°C.
Aliquot to avoid repeated freezing and thawing.

Note

This product contains sodium azide: a POISONOUS AND HAZARDOUS SUBSTANCE which should be handled by trained staff only.

Applications

- Immunohistochemistry (Formalin/PFA-fixed paraffin-embedded sections)

Immunohistochemical staining of human placenta with KIF7 polyclonal antibody (Cat # PAB28106) shows strong cytoplasmic positivity in trophoblastic cells at 1:500-1:1000 dilution.

Gene Info — KIF7

Entrez GeneID[374654](#)**Protein Accession#**[Q2M1P5](#)**Gene Name**

KIF7

Gene Alias

MGC120653, MGC138476, MGC138478, UNQ340

Gene Description

kinesin family member 7

Omim ID[611254](#)**Gene Ontology**[Hyperlink](#)**Other Designations**

EQYK340