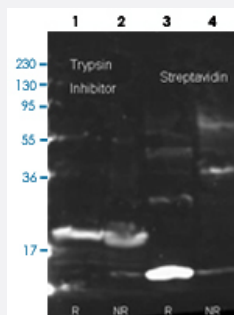


# KT13 polyclonal antibody

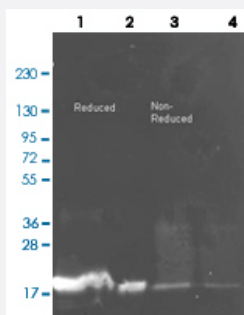
Catalog # PAB28065      Size 100 ug

## Applications



### Western Blot (Recombinant protein)

Western blot analysis of recombinant protein at lane 1 and 3: reducing condition; lane 2 and 4: non-reducing condition.



### Western Blot (Recombinant protein)

Western Blot analysis of (1) Reduced 1 ug purified soybean trypsin inhibitor contained 4% BME, (2) Non-reduced conditions at 0.25 ug.

## Specification

Product Description	Rabbit polyclonal antibody raised against native KT13 (soybean).
Immunogen	Native purified soybean KT13 .
Host	Rabbit
Reactivity	Plants
Form	Liquid
Isotype	IgG

<b>Recommend Usage</b>	ELISA (1:5000 - 1:20000) Immunoprecipitation (1:100) Western Blot (1:500-1:5000) The optimal working dilution should be determined by the end user.
<b>Storage Buffer</b>	In 20 mM KH <sub>2</sub> PO <sub>4</sub> , 150 mM NaCl, pH 7.2 (0.01% sodium azide)
<b>Storage Instruction</b>	Store at 4°C. For long term storage store at -20°C. Aliquot after reconstitution to avoid repeated freezing and thawing.
<b>Note</b>	This product contains sodium azide: a POISONOUS AND HAZARDOUS SUBSTANCE which should be handled by trained staff only.

## Applications

- Western Blot (Recombinant protein)

Western blot analysis of recombinant protein at lane 1 and 3: reducing condition; lane 2 and 4: non-reducing condition.

- Western Blot (Recombinant protein)

Western Blot analysis of (1) Reduced 1 ug purified soybean trypsin inhibitor contained 4% BME, (2) Non-reduced conditions at 0.25 ug.

- Immunoprecipitation

- Enzyme-linked Immunoabsorbent Assay

## Gene Info — KTi3

<b>Entrez GeneID</b>	<a href="#">547831</a>
<b>Gene Name</b>	KTi3
<b>Gene Alias</b>	KTi
<b>Gene Description</b>	Kunitz trypsin inhibitor
<b>Gene Ontology</b>	<a href="#">Hyperlink</a>
<b>Gene Summary</b>	KTi
<b>Other Designations</b>	Kunitz trypsin inhibitor, KTi