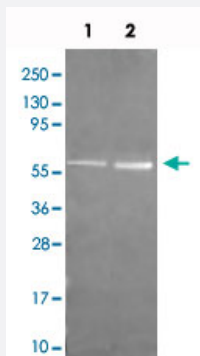


CAT polyclonal antibody

Catalog # PAB28064 Size 100 ug

Applications



Western Blot (Recombinant protein)

Western Blot analysis by CAT polyclonal antibody (Cat # PAB27918) at 1:1000. Lane 1: Reduced at about 1ug (4% beta-Mercaptoethanol, boiled for 5 minutes). Lane 2: Non-reduced conditions at about 1 ug. Detected CAT at 59.9 kDa and 55kDa.

Specification

| | |
|--------------------------------|---|
| Product Description | Rabbit polyclonal antibody raised against native CAT (Bovine). |
| Immunogen | Native purified bovine CAT . |
| Host | Rabbit |
| Reactivity | Bovine, Human, Mouse, Rat, Sheep |
| Form | Liquid |
| Isotype | IgG |
| Quality Control Testing | Antibody Reactive Against Native Purified Protein. |
| Recommend Usage | ELISA (1:20000) Western Blot (1:10000-1:50000) The optimal working dilution should be determined by the end user. |
| Storage Buffer | In 20 mM KH ₂ PO ₄ , 150 mM NaCl, pH 7.2 (0.01% sodium azide) |
| Storage Instruction | Store at 4°C. For long term storage store at -20°C. Aliquot after reconstitution to avoid repeated freezing and thawing. |

Note

This product contains sodium azide: a POISONOUS AND HAZARDOUS SUBSTANCE which should be handled by trained staff only.

Applications

- Western Blot (Recombinant protein)

Western Blot analysis by CAT polyclonal antibody (Cat # PAB27918) at 1:1000. Lane 1: Reduced at about 1ug (4% beta-Mercaptoethanol, boiled for 5 minutes). Lane 2: Non-reduced conditions at about 1 ug. Detected CAT at 59.9 kDa and 55kDa.

- Immunohistochemistry

- Enzyme-linked Immunoabsorbent Assay

Gene Info — CAT

| | |
|---------------|------------------------|
| Entrez GeneID | 531682 |
|---------------|------------------------|

| | |
|-----------|-----|
| Gene Name | CAT |
|-----------|-----|

| | |
|------------|-----------|
| Gene Alias | MGC128112 |
|------------|-----------|

| | |
|------------------|----------|
| Gene Description | catalase |
|------------------|----------|

| | |
|---------------|---------------------------|
| Gene Ontology | Hyperlink |
|---------------|---------------------------|

| | |
|--------------------|---|
| Other Designations | - |
|--------------------|---|