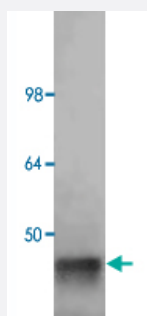


ALDOA polyclonal antibody

Catalog # PAB28056 Size 100 ug

Applications



Western Blot (Cell lysate)

Western Blot analysis of human 293 cell lysate by ALDOA polyclonal antibody (Cat # PAB27910) at 1:1000. Detected ALDOA at about 41 kDa.

Specification

Product Description	Goat polyclonal antibody raised against native ALDOA (Rabbit).
Immunogen	Native purified ALDOA from rabbit muscle.
Host	Goat
Reactivity	Human, Rabbit
Form	Lyophilized
Isotype	IgG
Quality Control Testing	Antibody Reactive Against Native Purified Protein.
Recommend Usage	ELISA (1:5000 - 1:20000) Immunoprecipitation (1:100) Western Blot (1:500-1:5000) The optimal working dilution should be determined by the end user.
Storage Buffer	Lyophilized from 20 mM potassium phosphate buffer, 150 mM NaCl, pH 7.2 (0.01% sodium azide)

Storage Instruction

Store at 4°C on dry atmosphere.
After reconstitution with 0.1 mL of deionized water, store at -20°C or lower.
Aliquot to avoid repeated freezing and thawing.

Note

This product contains sodium azide: a POISONOUS AND HAZARDOUS SUBSTANCE which should be handled by trained staff only.

Applications

- Western Blot (Cell lysate)

Western Blot analysis of human 293 cell lysate by ALDOA polyclonal antibody (Cat # PAB27910) at 1:1000. Detected ALDOA at about 41 kDa.

- Immunoprecipitation

- Enzyme-linked Immunoabsorbent Assay

Gene Info — ALDOA

Entrez GeneID	100009055
---------------	---------------------------

Gene Name	ALDOA
-----------	-------

Gene Alias	-
------------	---

Gene Description	aldolase A
------------------	------------

Gene Ontology	Hyperlink
---------------	---------------------------

Other Designations	-
--------------------	---