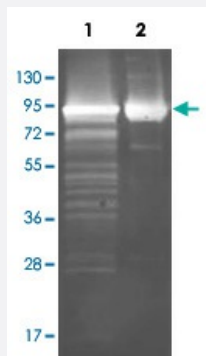


Maltose Phosphorylase polyclonal antibody

Catalog # PAB28048

Size 100 ug

Applications



Western Blot (Recombinant protein)

Western Blot analysis by Maltose Phosphorylase polyclonal antibody (Cat # PAB27902) at 1:3000. Lane 1: Reduced at about 1ug (4% beta-Mercaptoethanol, boiled for 5 minutes). Lane 2: Non-reduced conditions at about 1ug.

Specification

Product Description	Goat polyclonal antibody raised against native Maltose Phosphorylase (E. coli).
Immunogen	Native purified <i>Escherichia coli</i> Maltose Phosphorylase.
Host	Goat
Reactivity	Bacteria
Form	Lyophilized
Isotype	IgG
Quality Control Testing	Antibody Reactive Against Native Purified Protein.
Recommend Usage	ELISA (1:5000 - 1:20000) Immunoprecipitation (1:100) Western Blot (1:500-1:5000) The optimal working dilution should be determined by the end user.
Storage Buffer	Lyophilized from 20 mM potassium phosphate buffer, 150 mM NaCl, pH 7.2 (0.01% sodium azide)

Storage Instruction

Store at 4°C on dry atmosphere.
After reconstitution with 0.1 mL of deionized water, store at -20°C or lower.
Aliquot to avoid repeated freezing and thawing.

Note

This product contains sodium azide: a POISONOUS AND HAZARDOUS SUBSTANCE which should be handled by trained staff only.

Applications

- Western Blot (Recombinant protein)

Western Blot analysis by Maltose Phosphorylase polyclonal antibody (Cat # PAB27902) at 1:3000. Lane 1: Reduced at about 1ug (4% beta-Mercaptoethanol, boiled for 5 minutes). Lane 2: Non-reduced conditions at about 1ug.

- Immunoprecipitation

- Enzyme-linked Immunoabsorbent Assay

Gene Info — LAF_0025

Entrez GeneID	6233598
----------------------	-------------------------

Gene Name	LAF_0025
------------------	----------

Gene Alias	-
-------------------	---

Gene Description	maltose phosphorylase
-------------------------	-----------------------

Gene Ontology	Hyperlink
----------------------	---------------------------

Other Designations	-
---------------------------	---