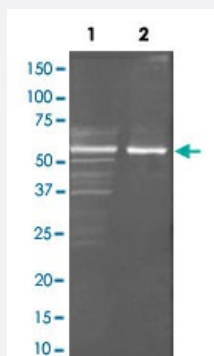


# choD polyclonal antibody

Catalog # PAB28045      Size 100 ug

## Applications



### Western Blot (Recombinant protein)

Western Blot analysis by choD polyclonal antibody (Cat # PAB27899) at 1:3000. Lane 1: Reduced at about 1ug (4% beta-Mercaptoethanol, boiled for 5 minutes). Lane 2: Non-reduced conditions at about 1ug.

## Specification

<b>Product Description</b>	Goat polyclonal antibody raised against native choD (Microorganism).
<b>Immunogen</b>	Native purified Microorganism choD.
<b>Host</b>	Goat
<b>Reactivity</b>	Bacteria
<b>Form</b>	Lyophilized
<b>Isotype</b>	IgG
<b>Quality Control Testing</b>	Antibody Reactive Against Native Purified Protein.
<b>Recommend Usage</b>	ELISA (1:5000 - 1:20000) Immunoprecipitation (1:100) Western Blot (1:500-1:5000) The optimal working dilution should be determined by the end user.
<b>Storage Buffer</b>	Lyophilized from 20 mM potassium phosphate buffer, 150 mM NaCl, pH 7.2 (0.01% sodium azide)

**Storage Instruction**

Store at 4°C on dry atmosphere.  
After reconstitution with 0.1 mL of deionized water, store at -20°C or lower.  
Aliquot to avoid repeated freezing and thawing.

**Note**

This product contains sodium azide: a POISONOUS AND HAZARDOUS SUBSTANCE which should be handled by trained staff only.

## Applications

- Western Blot (Recombinant protein)

Western Blot analysis by choD polyclonal antibody (Cat # PAB27899) at 1:3000. Lane 1: Reduced at about 1ug (4% beta-Mercaptoethanol, boiled for 5 minutes). Lane 2: Non-reduced conditions at about 1ug.

- Immunoprecipitation

- Enzyme-linked Immunoabsorbent Assay

## Gene Info — choD

<b>Entrez GeneID</b>	<a href="#">1215660</a>
----------------------	-------------------------

<b>Gene Name</b>	choD
------------------	------

<b>Gene Alias</b>	-
-------------------	---

<b>Gene Description</b>	cholesterol oxidase
-------------------------	---------------------

<b>Gene Ontology</b>	<a href="#">Hyperlink</a>
----------------------	---------------------------

<b>Other Designations</b>	-
---------------------------	---