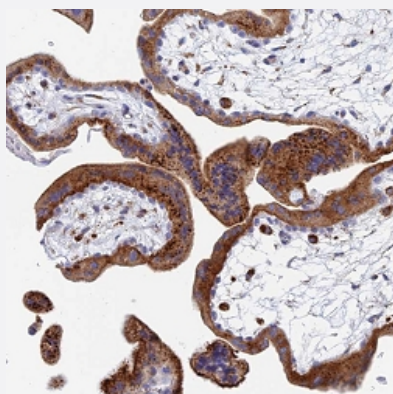


SPNS1 polyclonal antibody

Catalog # PAB28037 Size 100 uL

Applications



Immunohistochemistry (Formalin/PFA-fixed paraffin-embedded sections)

Immunohistochemical staining of human placenta with SPNS1 polyclonal antibody (Cat # PAB28037) shows strong cytoplasmic positivity in trophoblastic cells at 1:50 - 1:200 dilution.

Specification

Product Description	Rabbit polyclonal antibody raised against recombinant SPNS1.
Immunogen	Recombinant protein corresponding to amino acids of human SPNS1
Sequence	RAQLHVQGLLHEAGSTDDRIVVPQRGRSTRVPVASVLI
Host	Rabbit
Reactivity	Human
Form	Liquid
Purification	Antigen affinity purification
Isotype	IgG
Recommend Usage	Immunohistochemistry (1:50 - 1:200) The optimal working dilution should be determined by the end user.
Storage Buffer	In PBS, pH 7.2, (40% glycerol, 0.02% sodium azide)

Storage Instruction

Store at 4°C. For long term storage store at -20°C.
Aliquot to avoid repeated freezing and thawing.

Note

This product contains sodium azide: a POISONOUS AND HAZARDOUS SUBSTANCE which should be handled by trained staff only.

Applications

- Immunohistochemistry (Formalin/PFA-fixed paraffin-embedded sections)

Immunohistochemical staining of human placenta with SPNS1 polyclonal antibody (Cat # PAB28037) shows strong cytoplasmic positivity in trophoblastic cells at 1:50 - 1:200 dilution.

Gene Info — SPNS1

Entrez GeneID[83985](#)**Gene Name**

SPNS1

Gene Alias

FLJ38358, HSpin1, LAT, PP2030, SPIN1, SPINL, nrs

Gene Description

spinster homolog 1 (Drosophila)

Gene Ontology[Hyperlink](#)**Other Designations**

spinster homolog 1|spinster-like