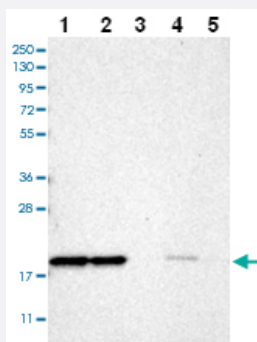


CHCHD2 polyclonal antibody

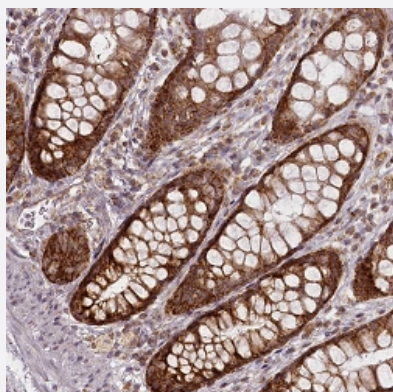
Catalog # PAB28031 Size 100 uL

Applications



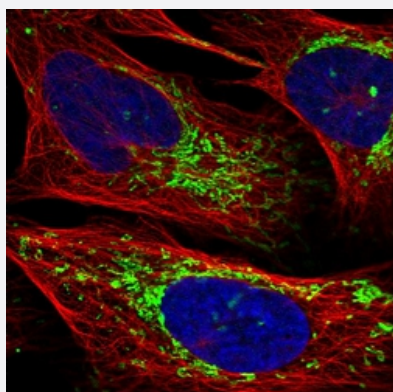
Western Blot

Western blot analysis of Lane 1: RT-4 Lane 2: U-251 MG Lane 3: Human Plasma Lane 4: Liver Lane 5: Tonsil with CHCHD2 polyclonal antibody (Cat # PAB28031) at 1:250 - 1:500 dilution.



Immunohistochemistry (Formalin/PFA-fixed paraffin-embedded sections)

Immunohistochemical staining of human rectum with CHCHD2 polyclonal antibody (Cat # PAB28031) shows strong cytoplasmic positivity in glandular cells at 1:50 - 1:200 dilution.



Immunofluorescence

Immunofluorescent staining of human cell line U-2 OS with CHCHD2 polyclonal antibody (Cat # PAB28031) at 1-4 ug/ml dilution shows positivity in mitochondria.

Specification

Product Description	Rabbit polyclonal antibody raised against recombinant CHCHD2.
Immunogen	Recombinant protein corresponding to amino acids of human CHCHD2
Sequence	YQQHQGTQPAQQQQPCLYEIKQFLECAQNQGDIKLCEGFNEVLKQCRLANR
Host	Rabbit
Reactivity	Human
Form	Liquid
Purification	Antigen affinity purification
Isotype	IgG
Recommend Usage	Immunohistochemistry (1:50 - 1:200) Western Blot (1:250 - 1:500) Immunofluorescence (1-4 µg/ml) The optimal working dilution should be determined by the end user.
Storage Buffer	In PBS, pH 7.2, (40% glycerol, 0.02% sodium azide)
Storage Instruction	Store at 4°C. For long term storage store at -20°C. Aliquot to avoid repeated freezing and thawing.
Note	This product contains sodium azide: a POISONOUS AND HAZARDOUS SUBSTANCE which should be handled by trained staff only.

Applications

- Western Blot

Western blot analysis of Lane 1: RT-4 Lane 2: U-251 MG Lane 3: Human Plasma Lane 4: Liver Lane 5: Tonsil with CHCHD2 polyclonal antibody (Cat # PAB28031) at 1:250 - 1:500 dilution.

- Immunohistochemistry (Formalin/PFA-fixed paraffin-embedded sections)

Immunohistochemical staining of human rectum with CHCHD2 polyclonal antibody (Cat # PAB28031) shows strong cytoplasmic positivity in glandular cells at 1:50 - 1:200 dilution.

- Immunofluorescence

Immunofluorescent staining of human cell line U-2 OS with CHCHD2 polyclonal antibody (Cat # PAB28031) at 1-4 µg/ml dilution shows positivity in mitochondria.

Gene Info — CHCHD2

Entrez GeneID	51142
Gene Name	CHCHD2
Gene Alias	C7orf17
Gene Description	coiled-coil-helix-coiled-coil-helix domain containing 2
Gene Ontology	Hyperlink
Other Designations	16.7kD protein aging-associated gene 10 protein