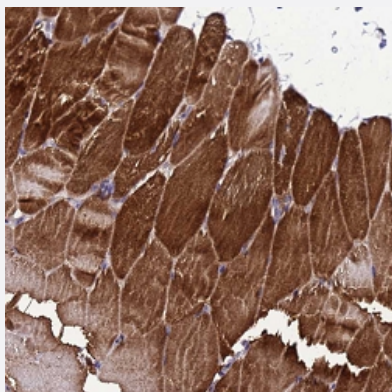


GZF1 polyclonal antibody

Catalog # PAB28029 Size 100 uL

Applications



Immunohistochemistry (Formalin/PFA-fixed paraffin-embedded sections)

Immunohistochemical staining of human skeletal muscle with GZF1 polyclonal antibody (Cat # PAB28029) shows strong cytoplasmic positivity in myocytes.

Specification

Product Description	Rabbit polyclonal antibody raised against recombinant GZF1.
Immunogen	Recombinant protein corresponding to amino acids of human GZF1
Sequence	MLEVAEKLKCLDLSETCFQLKKQMLESVLELQNFSESQEVEVSSGSQVSAAPAPRASVATDG PHPSGLTDSLDPGERASNGMSSDLPPKK
Host	Rabbit
Reactivity	Human
Form	Liquid
Purification	Antigen affinity purification
Isotype	IgG
Recommend Usage	Immunohistochemistry (1:20 - 1:50) The optimal working dilution should be determined by the end user.
Storage Buffer	In PBS, pH 7.2, (40% glycerol, 0.02% sodium azide)

Storage Instruction

Store at 4°C. For long term storage store at -20°C.
Aliquot to avoid repeated freezing and thawing.

Note

This product contains sodium azide: a POISONOUS AND HAZARDOUS SUBSTANCE which should be handled by trained staff only.

Applications

- Immunohistochemistry (Formalin/PFA-fixed paraffin-embedded sections)

Immunohistochemical staining of human skeletal muscle with GZF1 polyclonal antibody (Cat # PAB28029) shows strong cytoplasmic positivity in myocytes.

Gene Info — GZF1

Entrez GeneID[64412](#)**Gene Name**

GZF1

Gene Alias

ZBTB23, ZNF336

Gene Description

GDNF-inducible zinc finger protein 1

Gene Ontology[Hyperlink](#)**Other Designations**

OTTHUMP00000030431|zinc finger protein 336