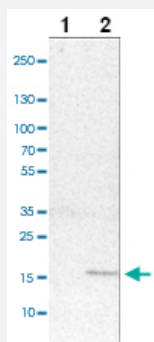


# MRPS24 polyclonal antibody

Catalog # PAB28022      Size 100 uL

## Applications

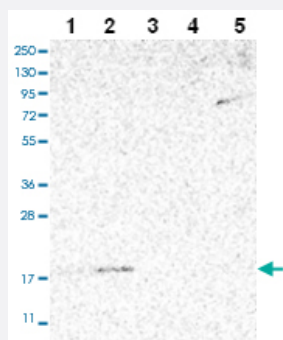


### Western Blot (Cell lysate)

Western blot analysis of cell lysates with MRPS24 polyclonal antibody ( Cat # PAB28022 ) at 1:100-1:500 dilution.

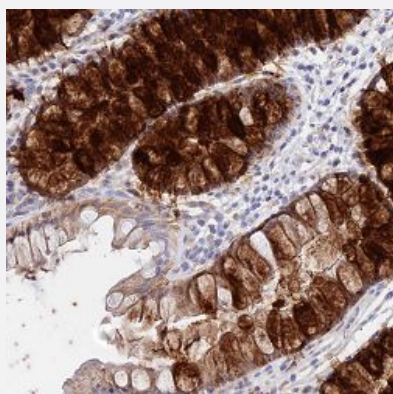
Lane 1: NIH-3T3

Lane 2: NBT-II



### Western Blot

Western blot analysis of Lane 1: RT-4 Lane 2: U-251 MG Lane 3: Human Plasma Lane 4: Liver Lane 5: Tonsil with MRPS24 polyclonal antibody ( Cat # PAB28022 ) at 1:100 - 1:250 dilution.



### Immunohistochemistry (Formalin/PFA-fixed paraffin-embedded sections)

Immunohistochemical staining of human colon with MRPS24 polyclonal antibody ( Cat # PAB28022 ) shows strong cytoplasmic positivity in goblet cells at 1:20 - 1:50 dilution.

## Specification

### Product Description

Rabbit polyclonal antibody raised against recombinant MRPS24.

<b>Immunogen</b>	Recombinant protein corresponding to amino acids of human MRPS24
<b>Sequence</b>	GTFFPGCLADQLVLKRRGNQLEICAVVLRQLSPHKYYFLVGYSSETLLSYFYKCPVRLHLQTVPSKVV YKY
<b>Host</b>	Rabbit
<b>Reactivity</b>	Human
<b>Form</b>	Liquid
<b>Purification</b>	Antigen affinity purification
<b>Isotype</b>	IgG
<b>Recommend Usage</b>	Immunohistochemistry (1:20 - 1:50) Western Blot (1:100 - 1:250) The optimal working dilution should be determined by the end user.
<b>Storage Buffer</b>	In PBS, pH 7.2, (40% glycerol, 0.02% sodium azide)
<b>Storage Instruction</b>	Store at 4°C. For long term storage store at -20°C. Aliquot to avoid repeated freezing and thawing.
<b>Note</b>	This product contains sodium azide: a POISONOUS AND HAZARDOUS SUBSTANCE which should be handled by trained staff only.

## Applications

- Western Blot (Cell lysate)

Western blot analysis of cell lysates with MRPS24 polyclonal antibody ( Cat # PAB28022 ) at 1:100-1:500 dilution.

Lane 1: NIH-3T3

Lane 2: NBT-II

- Western Blot

Western blot analysis of Lane 1: RT-4 Lane 2: U-251 MG Lane 3: Human Plasma Lane 4: Liver Lane 5: Tonsil with MRPS24 polyclonal antibody ( Cat # PAB28022 ) at 1:100 - 1:250 dilution.

- Immunohistochemistry (Formalin/PFA-fixed paraffin-embedded sections)

Immunohistochemical staining of human colon with MRPS24 polyclonal antibody ( Cat # PAB28022 ) shows strong cytoplasmic positivity in goblet cells at 1:20 - 1:50 dilution.

## Gene Info — MRPS24

Entrez GeneID

[64951](#)

<b>Gene Name</b>	MRPS24
<b>Gene Alias</b>	HSPC335, MRP-S24
<b>Gene Description</b>	mitochondrial ribosomal protein S24
<b>Gene Ontology</b>	<a href="#">Hyperlink</a>
<b>Gene Summary</b>	<p>Mammalian mitochondrial ribosomal proteins are encoded by nuclear genes and help in protein synthesis within the mitochondrion. Mitochondrial ribosomes (mitoribosomes) consist of a small 28S subunit and a large 39S subunit. They have an estimated 75% protein to rRNA composition compared to prokaryotic ribosomes, where this ratio is reversed. Another difference between mammalian mitoribosomes and prokaryotic ribosomes is that the latter contain a 5S rRNA. Among different species, the proteins comprising the mitoribosome differ greatly in sequence, and sometimes in biochemical properties, which prevents easy recognition by sequence homology. This gene encodes a 28S subunit protein. A pseudogene corresponding to this gene is found on chromosome 11. [provided by RefSeq]</p>
<b>Other Designations</b>	mitochondrial 28S ribosomal protein S24