

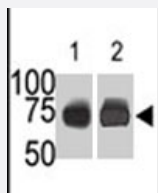
# SPHK2 polyclonal antibody

Catalog # PAB2802

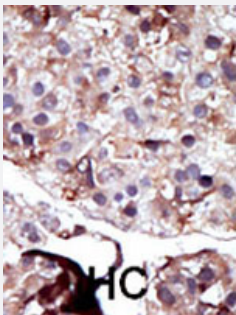
Size 400 uL

## Applications

### Western Blot (Transfected lysate)



The SPHK2 polyclonal antibody (Cat # PAB2802) is used in Western blot (Lane 1) to detect c-myc-tagged SPHK2 in transfected 293 cell lysate (ac-myc antibody is used as control in Lane 2) . Data is kindly provided by Dr. J. Van Brocklyn from the Ohio State University (Columbus, OH) .



### Immunohistochemistry (Formalin/PFA-fixed paraffin-embedded sections)

Formalin-fixed and paraffin-embedded human hepatocellular carcinoma tissue reacted with SPHK2 polyclonal antibody (Cat # PAB2802) , which was peroxidase-conjugated to the secondary antibody, followed by AEC staining. This data demonstrates the use of this antibody for immunohistochemistry; clinical relevance has not been evaluated. HC = hepatocarcinoma.

## Specification

Product Description	Rabbit polyclonal antibody raised against synthetic peptide of SPHK2.
Immunogen	A synthetic peptide (conjugated with KLH) corresponding to N-terminus of human SPHK2.
Host	Rabbit
Reactivity	Human
Form	Liquid
Purification	Protein G purification

<b>Recommend Usage</b>	Western Blot (1:1000) Immunohistochemistry (1:50-100) The optimal working dilution should be determined by the end user.
<b>Storage Buffer</b>	In PBS (0.09% sodium azide)
<b>Storage Instruction</b>	Store at 4°C. For long term storage store at -20°C. Aliquot to avoid repeated freezing and thawing.
<b>Note</b>	This product contains sodium azide: a POISONOUS AND HAZARDOUS SUBSTANCE which should be handled by trained staff only.

## Applications

- Western Blot (Transfected lysate)

The SPHK2 polyclonal antibody (Cat # PAB2802) is used in Western blot (Lane 1) to detect c-myc-tagged SPHK2 in transfected 293 cell lysate (ac-myc antibody is used as control in Lane 2) . Data is kindly provided by Dr. J. Van Brocklyn from the Ohio State University (Columbus, OH) .

- Immunohistochemistry (Formalin/PFA-fixed paraffin-embedded sections)

Formalin-fixed and paraffin-embedded human hepatocellular carcinoma tissue reacted with SPHK2 polyclonal antibody (Cat # PAB2802) , which was peroxidase-conjugated to the secondary antibody, followed by AEC staining. This data demonstrates the use of this antibody for immunohistochemistry; clinical relevance has not been evaluated. HC = hepatocarcinoma.

## Gene Info — SPHK2

<b>Entrez GeneID</b>	<a href="#">56848</a>
<b>Protein Accession#</b>	<a href="#">Q9NRA0</a>
<b>Gene Name</b>	SPHK2
<b>Gene Alias</b>	-
<b>Gene Description</b>	sphingosine kinase 2
<b>Omim ID</b>	<a href="#">607092</a>
<b>Gene Ontology</b>	<a href="#">Hyperlink</a>
<b>Other Designations</b>	sphingosine kinase type 2 isoform

## Publication Reference

- [Sphingosine 1-phosphate modulates spinal nociceptive processing.](#)

Coste O, Brenneis C, Linke B, Pierre S, Maeurer C, Becker W, Schmidt H, Gao W, Geisslinger G, Scholich K.

The Journal of Biological Chemistry 2008 Sep; 283(47):32442.

## Pathway

- [Calcium signaling pathway](#)
- [Fc gamma R-mediated phagocytosis](#)
- [Metabolic pathways](#)
- [Sphingolipid metabolism](#)
- [VEGF signaling pathway](#)