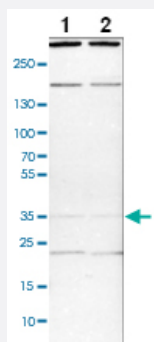


SYF2 polyclonal antibody

Catalog # PAB28017 Size 100 uL

Applications

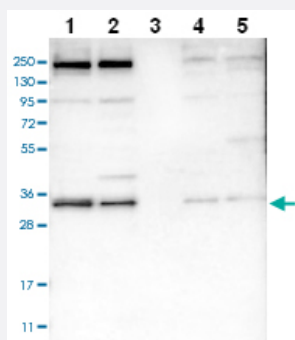


Western Blot (Cell lysate)

Western blot analysis of cell lysates with SYF2 polyclonal antibody (Cat # PAB28017).

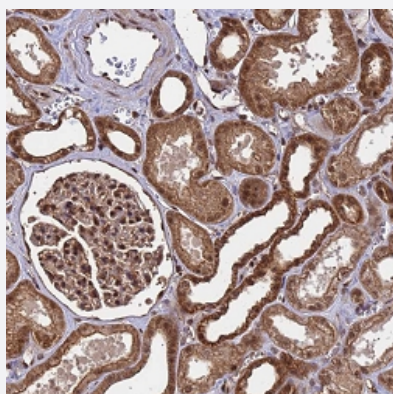
Lane 1: NIH-3T3

Lane 2: NBT-II



Western Blot

Western blot analysis of Lane 1: RT-4 Lane 2: U-251 MG Lane 3: Human Plasma Lane 4: Liver Lane 5: Tonsil with SYF2 polyclonal antibody (Cat # PAB28017).



Immunohistochemistry (Formalin/PFA-fixed paraffin-embedded sections)

Immunohistochemical staining of human kidney with SYF2 polyclonal antibody (Cat # PAB28017) shows strong cytoplasmic/ nuclear and membranous positivity in cells in tubules.

Specification

Product Description

Rabbit polyclonal antibody raised against recombinant SYF2.

Immunogen	Recombinant protein corresponding to amino acids of human SYF2
Sequence	AAIAASEVLVDSAEEGSLAAAAELAAQKREQRLRKFRHLMRNEARKLNHQEVVEEDKRLKLP ANWEAKKARLEWELKEEEKKKECAARG
Host	Rabbit
Reactivity	Human
Form	Liquid
Purification	Antigen affinity purification
Isotype	IgG
Recommend Usage	Immunohistochemistry (1:500 - 1:1000) Western Blot (1:100 - 1:250) The optimal working dilution should be determined by the end user.
Storage Buffer	In PBS, pH 7.2, (40% glycerol, 0.02% sodium azide)
Storage Instruction	Store at 4°C. For long term storage store at -20°C. Aliquot to avoid repeated freezing and thawing.
Note	This product contains sodium azide: a POISONOUS AND HAZARDOUS SUBSTANCE which should be handled by trained staff only.

Applications

- Western Blot (Cell lysate)

Western blot analysis of cell lysates with SYF2 polyclonal antibody (Cat # PAB28017).

Lane 1: NIH-3T3

Lane 2: NBT-II

- Western Blot

Western blot analysis of Lane 1: RT-4 Lane 2: U-251 MG Lane 3: Human Plasma Lane 4: Liver Lane 5: Tonsil with SYF2 polyclonal antibody (Cat # PAB28017).

- Immunohistochemistry (Formalin/PFA-fixed paraffin-embedded sections)

Immunohistochemical staining of human kidney with SYF2 polyclonal antibody (Cat # PAB28017) shows strong cytoplasmic/ nuclear and membranous positivity in cells in tubules.

Gene Info — SYF2

Entrez GeneID

[25949](#)

Gene Name	SYF2
Gene Alias	CBPIN, DKFZp564O2082, NTC31, P29, fSAP29
Gene Description	SYF2 homolog, RNA splicing factor (S. cerevisiae)
Omim ID	607090
Gene Ontology	Hyperlink
Gene Summary	This gene encodes a nuclear protein that interacts with cyclin D-type binding-protein 1, which is thought to be a cell cycle regulator at the G1/S transition. Alternate transcriptional splice variants, encoding different isoforms, have been characterized. [provided by RefSeq]
Other Designations	CCNDBP1 interactor GCIP-interacting protein p29 OTTHUMP00000040538 OTTHUMP00000040539 SYF2 homolog, RNA splicing factor functional spliceosome-associated protein 29