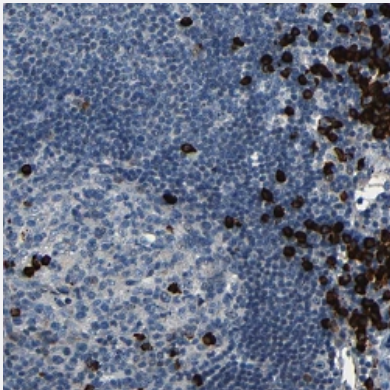


PLA2R1 polyclonal antibody

Catalog # PAB28009 Size 100 uL

Applications



Immunohistochemistry (Formalin/PFA-fixed paraffin-embedded sections)

Immunohistochemical staining of human lymph node with PLA2R1 polyclonal antibody (Cat # PAB28009) shows strong cytoplasmic positivity in a subset of cells at 1:500 - 1:1000 dilution.

Specification

Product Description	Rabbit polyclonal antibody raised against recombinant PLA2R1.
Immunogen	Recombinant protein corresponding to amino acids of human PLA2R1
Sequence	EEKTWHEALRSCQADNSALIDITSLAEVEFLVTLLGDENASETWIGLSSNKIPVSFEWSNDSSVIFT NWHLEPHIFPNRSQLCVSAEQSEGHWKVKNCERLFYICKKAGHVLSDAESGCQEGWERHGG FCYKID
Host	Rabbit
Reactivity	Human
Form	Liquid
Purification	Antigen affinity purification
Isotype	IgG
Recommend Usage	Immunohistochemistry (1:500-1:1000) The optimal working dilution should be determined by the end user.

Storage Buffer	In PBS, pH 7.2 (40% glycerol, 0.02% sodium azide)
Storage Instruction	Store at 4°C. For long term storage store at -20°C. Aliquot to avoid repeated freezing and thawing.
Note	This product contains sodium azide: a POISONOUS AND HAZARDOUS SUBSTANCE which should be handled by trained staff only.

Applications

- Immunohistochemistry (Formalin/PFA-fixed paraffin-embedded sections)

Immunohistochemical staining of human lymph node with PLA2R1 polyclonal antibody (Cat # PAB28009) shows strong cytoplasmic positivity in a subset of cells at 1:500 - 1:1000 dilution.

Gene Info — PLA2R1

Entrez GeneID	22925
Gene Name	PLA2R1
Gene Alias	CLEC13C, PLA2-R, PLA2G1R, PLA2IR, PLA2R
Gene Description	phospholipase A2 receptor 1, 180kDa
Omim ID	604939
Gene Ontology	Hyperlink
Gene Summary	Secretory phospholipases A2 (PLA2s) have been purified from a variety of mammalian tissues as well as from insect and snake venoms. The prototype group I PLA2, the pancreatic PLA2 (PLA2 G1B; MIM 172410), is involved in digestion, smooth muscle contraction, and cell proliferation. The prototype group II PLA2, the inflammatory-type PLA2 (PLA2G2A; MIM 172411), is involved in inflammatory conditions and is upregulated by proinflammatory cytokines like tumor necrosis factor (TNF; MIM 191160) and interleukin-1 (e.g., IL1B; MIM 147720). Differential toxicity of snake venom Pla2 appears to be linked to a variety of high-affinity receptors in different organs (Ancian et al., 1995 [PubMed 7721806]).[supplied by OMIM]
Other Designations	phospholipase A2 receptor 1

Disease

- [Genetic Predisposition to Disease](#)
- [Thyroid Neoplasms](#)