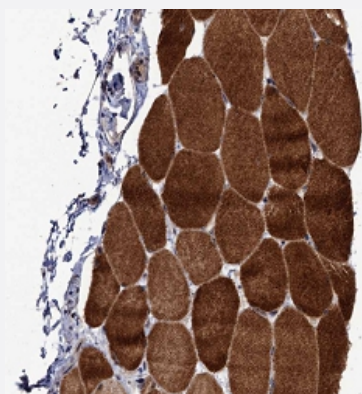


LRRC63 polyclonal antibody

Catalog # PAB27999 Size 100 uL

Applications



Immunohistochemistry (Formalin/PFA-fixed paraffin-embedded sections)

Immunohistochemical staining of human skeletal muscle with LRRC63 polyclonal antibody (Cat # PAB27999) shows strong cytoplasmic positivity in myocytes at 1:50 - 1:200 dilution.

Specification

| | |
|---------------------|---|
| Product Description | Rabbit polyclonal antibody raised against recombinant LRRC63. |
| Immunogen | Recombinant protein corresponding to amino acids of human LRRC63 |
| Sequence | FPHCNSASTRIFGKQTNKMESSRKFKTMKDVYTEKRLLENILSSKFSKPKSTPGSVIAQKLEKMH PKHQPLPESPGYTYQHISRDLSATVPSPPPMTVSMKPE |
| Host | Rabbit |
| Reactivity | Human |
| Form | Liquid |
| Purification | Antigen affinity purification |
| Isotype | IgG |
| Recommend Usage | Immunohistochemistry (1:50 - 1:200) The optimal working dilution should be determined by the end user. |
| Storage Buffer | In PBS, pH 7.2, (40% glycerol, 0.02% sodium azide) |

Storage Instruction

Store at 4°C. For long term storage store at -20°C.
Aliquot to avoid repeated freezing and thawing.

Note

This product contains sodium azide: a POISONOUS AND HAZARDOUS SUBSTANCE which should be handled by trained staff only.

Applications

- Immunohistochemistry (Formalin/PFA-fixed paraffin-embedded sections)

Immunohistochemical staining of human skeletal muscle with LRRC63 polyclonal antibody (Cat # PAB27999) shows strong cytoplasmic positivity in myocytes at 1:50 - 1:200 dilution.

Gene Info — LRRC63

Entrez GeneID[220416](#)**Gene Name**

LRRC63

Gene Alias

-

Gene Description

leucine rich repeat containing 63

Gene Ontology[Hyperlink](#)**Other Designations**

OTTHUMP00000018363|RP11-139H14.4