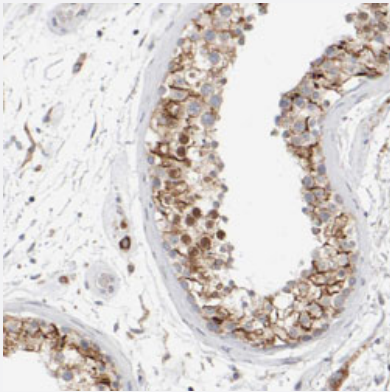


# ZFP112 polyclonal antibody

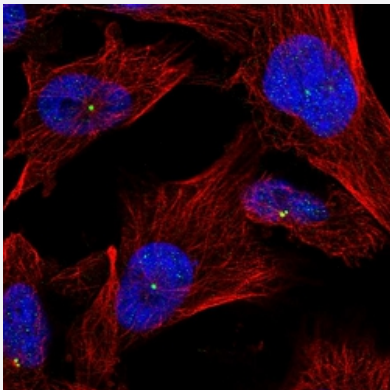
Catalog # PAB27992      Size 100 uL

## Applications



### Immunohistochemistry (Formalin/PFA-fixed paraffin-embedded sections)

Immunohistochemical staining of human testis.



### Immunofluorescence

Immunofluorescent staining of U-251 MG cells.

## Specification

<b>Product Description</b>	Rabbit polyclonal antibody raised against recombinant ZFP112.
<b>Immunogen</b>	Recombinant protein corresponding to amino acids of human ZFP112.
<b>Sequence</b>	EREEKLLMVETETPRDGCSSGRKNQKMEISIQEVTVSFYSPKELSSRQTWQQSAGGLIRCQDFLK VFQ GKNSQLQEQGNSLGQVWAGIPVQISEDKNYIFTHIGNGSNYIKSQGYPSWRAHHSWRKMYLK ESHNYQCRCQQI
<b>Host</b>	Rabbit

Reactivity	Human
Form	Liquid
Purification	Antigen affinity purification
Isotype	IgG
Recommend Usage	Immunohistochemistry (1:20-1:50) Immunofluorescence (0.25-2 ug/mL) The optimal working dilution should be determined by the end user.
Storage Buffer	In PBS, pH 7.2, (40% glycerol, 0.02% sodium azide)
Storage Instruction	Store at 4°C. For long term storage store at -20°C. Aliquot to avoid repeated freezing and thawing.
Note	This product contains sodium azide: a POISONOUS AND HAZARDOUS SUBSTANCE which should be handled by trained staff only.

## Applications

- Immunohistochemistry (Formalin/PFA-fixed paraffin-embedded sections)  
Immunohistochemical staining of human testis.
- Immunofluorescence  
Immunofluorescent staining of U-251 MG cells.

## Gene Info — ZFP112

Entrez GeneID	<a href="#">7771</a>
Protein Accession#	<a href="#">Q9UJU3</a>
Gene Name	ZFP112
Gene Alias	ZNF228
Gene Description	zinc finger protein 112 homolog (mouse)
Gene Ontology	<a href="#">Hyperlink</a>
Other Designations	zinc finger protein 228