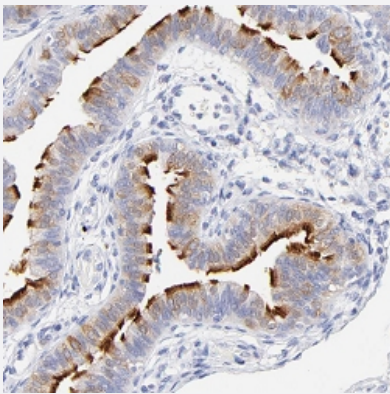


WDR65 polyclonal antibody

Catalog # PAB27990 Size 100 uL

Applications



Immunohistochemistry (Formalin/PFA-fixed paraffin-embedded sections)

Immunohistochemical staining of human fallopian tube with WDR65 polyclonal antibody (Cat # PAB27990) shows strong membranous positivity in glandular cells at 1:50 - 1:200 dilution.

Specification

Product Description	Rabbit polyclonal antibody raised against recombinant WDR65.
Immunogen	Recombinant protein corresponding to amino acids of human WDR65
Sequence	PESNLVYWLWEKQKVMAMVRIDTQNNPVYQVSFSPQDNTQVCVTGNGMFKLLRFAEGLTKQTSF QRGEPQNYLAHTWVADDKMVGTDTGKFLFESGDQRWETSIMVKEPTNGSKSLDVIQESLIE FPPVSSPLP
Host	Rabbit
Reactivity	Human
Form	Liquid
Purification	Antigen affinity purification
Isotype	IgG
Recommend Usage	Immunohistochemistry (1:50 - 1:200) The optimal working dilution should be determined by the end user.

Storage Buffer	In PBS, pH 7.2, (40% glycerol, 0.02% sodium azide)
Storage Instruction	Store at 4°C. For long term storage store at -20°C. Aliquot to avoid repeated freezing and thawing.
Note	This product contains sodium azide: a POISONOUS AND HAZARDOUS SUBSTANCE which should be handled by trained staff only.

Applications

- Immunohistochemistry (Formalin/PFA-fixed paraffin-embedded sections)

Immunohistochemical staining of human fallopian tube with WDR65 polyclonal antibody (Cat # PAB27990) shows strong membranous positivity in glandular cells at 1:50 - 1:200 dilution.

Gene Info — WDR65

Entrez GeneID	149465
Gene Name	WDR65
Gene Alias	FLJ32000, RP11-282K6.2
Gene Description	WD repeat domain 65
Gene Ontology	Hyperlink
Other Designations	OTTHUMP00000008355