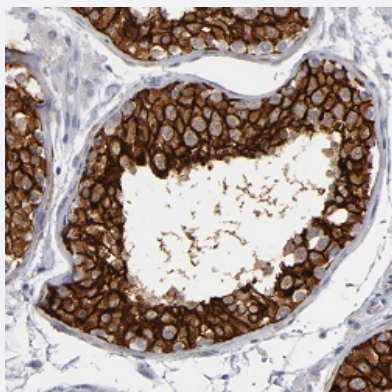


KIAA1210 polyclonal antibody

Catalog # PAB27988 Size 100 uL

Applications



Immunohistochemistry (Formalin/PFA-fixed paraffin-embedded sections)

Immunohistochemical staining of human testis with KIAA1210 polyclonal antibody (Cat # PAB27988) shows strong cytoplasmic and membranous positivity in cells of seminiferous ducts at 1:50 - 1:200 dilution.

Specification

Product Description	Rabbit polyclonal antibody raised against recombinant KIAA1210.
Immunogen	Recombinant protein corresponding to amino acids of human KIAA1210
Sequence	SQPETTTTPQGLLSDKDDMGRRNAGIDFGSRKASAAQPIPNMDNSMVSDPQPYHEDAASGAEK TEARASLSLMVESLSTTQEEAILSVAEEAQVFMNP SHIQLEDQEAFSFDLQKAQSKMESAQDVQ TICKEKPSGNVHQFTASV
Host	Rabbit
Reactivity	Human
Form	Liquid
Purification	Antigen affinity purification
Isotype	IgG
Recommend Usage	Immunohistochemistry (1:50-1:200) The optimal working dilution should be determined by the end user.

Storage Buffer	In PBS, pH 7.2 (40% glycerol, 0.02% sodium azide)
Storage Instruction	Store at 4°C. For long term storage store at -20°C. Aliquot to avoid repeated freezing and thawing.
Note	This product contains sodium azide: a POISONOUS AND HAZARDOUS SUBSTANCE which should be handled by trained staff only.

Applications

- Immunohistochemistry (Formalin/PFA-fixed paraffin-embedded sections)

Immunohistochemical staining of human testis with KIAA1210 polyclonal antibody (Cat # PAB27988) shows strong cytoplasmic and membranous positivity in cells of seminiferous ducts at 1:50 - 1:200 dilution.

Gene Info — KIAA1210

Entrez GeneID	57481
Gene Name	KIAA1210
Gene Alias	-
Gene Description	KIAA1210
Gene Ontology	Hyperlink
Other Designations	hypothetical protein LOC57481