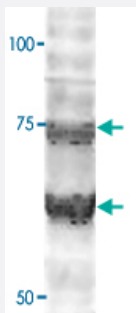


WLS polyclonal antibody

Catalog # PAB27986 Size 100 uL

Applications



Western Blot (Transfected lysate)

Western Blot analysis of WLS polyclonal antibody (1:2000) on HEK293 cell transfected with WLS-GFP. The 293 cell protein lysate contains both transfected WLS-GFP fusion protein (75KDa) and endogenous WLS protein (~55KDa).

Specification

Product Description	Chicken polyclonal antibody against synthetic peptide of WLS.
Immunogen	A Synthetic peptide corresponding to C-terminus region of WLS
Host	Chicken
Reactivity	Human, Mouse, Rat
Form	Liquid
Purification	Affinity purification
Concentration	1 mg/mL
Isotype	IgY
Recommend Usage	Western Blot (1:2000 to 1:5000) The optimal working dilution should be determined by the end user.
Storage Buffer	In Phosphate-Buffered Saline with 0.02% Sodium Azide.
Storage Instruction	Store at 4°C. For long term storage, aliquot and store at -20°C. Avoid repeated freezing and thawing cycles.

Note

This product contains sodium azide: a POISONOUS AND HAZARDOUS SUBSTANCE which should be handled by trained staff only.

Applications

- Western Blot (Transfected lysate)

Western Blot analysis of WLS polyclonal antibody (1:2000) on HEK293 cell transfected with WLS-GFP. The 293 cell protein lysate contains both transfected WLS-GFP fusion protein (75KDa) and endogenous WLS protein (~55KDa).

- Immunohistochemistry
- Immunocytochemistry

Gene Info — GPR177

Entrez GeneID	79971
Gene Name	GPR177
Gene Alias	C1orf139, EVI, FLJ23091, MGC131760, MGC14878, MRP, WLS
Gene Description	G protein-coupled receptor 177
Omim ID	611514
Gene Ontology	Hyperlink
Other Designations	OTTHUMP00000010725 OTTHUMP00000010727 putative NFkB activating protein 373 wntless homolog

Disease

- [Fractures](#)
- [Genetic Predisposition to Disease](#)
- [Osteoporosis](#)