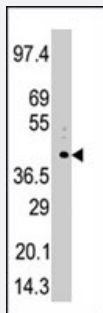


PHKG1 polyclonal antibody

Catalog # PAB2794

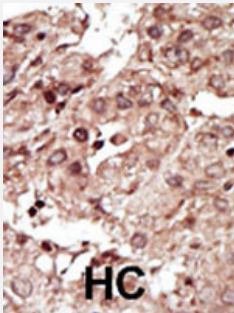
Size 400 uL

Applications



Western Blot (Cell lysate)

Western blot analysis of PHKG1 polyclonal antibody (Cat # PAB2794) in A-375 cell lysate. PHKG1 (arrow) was detected using purified polyclonal antibody. Secondary HRP-anti-rabbit was used for signal visualization with chemiluminescence.



Immunohistochemistry (Formalin/PFA-fixed paraffin-embedded sections)

Formalin-fixed and paraffin-embedded human hepatocellular carcinoma tissue reacted with PHKG1 polyclonal antibody (Cat # PAB2794), which was peroxidase-conjugated to the secondary antibody, followed by AEC staining. This data demonstrates the use of this antibody for immunohistochemistry; clinical relevance has not been evaluated. HC = hepatocarcinoma.

Specification

Product Description	Rabbit polyclonal antibody raised against synthetic peptide of PHKG1.
Immunogen	A synthetic peptide (conjugated with KLH) corresponding to internal region of human PHKG1.
Host	Rabbit
Reactivity	Human
Form	Liquid
Purification	Protein G purification

Recommend Usage	Western Blot (1:1000) Immunohistochemistry (1:50-100) The optimal working dilution should be determined by the end user.
Storage Buffer	In PBS (0.09% sodium azide)
Storage Instruction	Store at 4°C. For long term storage store at -20°C. Aliquot to avoid repeated freezing and thawing.
Note	This product contains sodium azide: a POISONOUS AND HAZARDOUS SUBSTANCE which should be handled by trained staff only.

Applications

- Western Blot (Cell lysate)

Western blot analysis of PHKG1 polyclonal antibody (Cat # PAB2794) in A-375 cell lysate. PHKG1 (arrow) was detected using purified polyclonal antibody. Secondary HRP-anti-rabbit was used for signal visualization with chemiluminescence.

- Immunohistochemistry (Formalin/PFA-fixed paraffin-embedded sections)

Formalin-fixed and paraffin-embedded human hepatocellular carcinoma tissue reacted with PHKG1 polyclonal antibody (Cat # PAB2794), which was peroxidase-conjugated to the secondary antibody, followed by AEC staining. This data demonstrates the use of this antibody for immunohistochemistry; clinical relevance has not been evaluated. HC = hepatocarcinoma.

Gene Info — PHKG1

Entrez GeneID	5260
Protein Accession#	Q16816
Gene Name	PHKG1
Gene Alias	PHKG
Gene Description	phosphorylase kinase, gamma 1 (muscle)
Omim ID	172470
Gene Ontology	Hyperlink
Gene Summary	This gene is a member of the Ser/Thr protein kinase family and encodes a protein with one protein kinase domain and two calmodulin-binding domains. This protein is the catalytic member of a 16 subunit protein kinase complex which contains equimolar ratios of 4 subunit types. The complex is a crucial glycogenolytic regulatory enzyme. This gene has two pseudogenes at chromosome 7q11.21 and one at chromosome 11p11.12. [provided by RefSeq]

Other Designations

phosphorylase b kinase gamma catalytic chain, skeletal muscle isoform|phosphorylase kinase gamma subunit 1

Publication Reference

- [Localisation of the gene encoding the catalytic gamma subunit of phosphorylase kinase to human chromosome bands 7p12-q21.](#)

Jones TA, da Cruz e Silva EF, Spurr NK, Sheer D, Cohen PT.

Biochimica et Biophysica Acta 1990 Jan; 1048(1):24.

Pathway

- [Calcium signaling pathway](#)
- [Insulin signaling pathway](#)