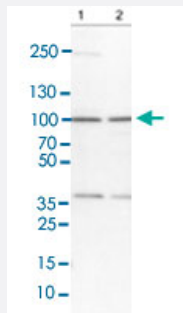


TBL3 polyclonal antibody

Catalog # PAB27929

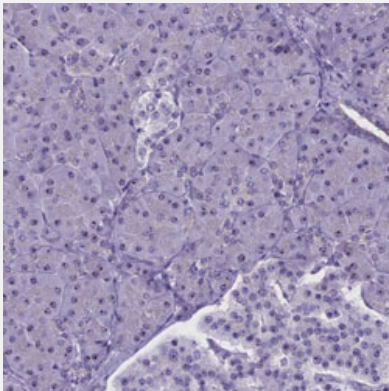
Size 100 uL

Applications



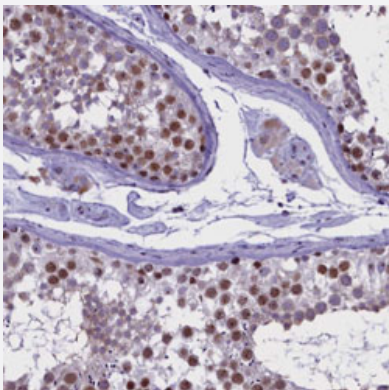
Western Blot (Cell lysate)

Western blot analysis of Lane 1: NIH-3T3 cell lysate; Lane 2: NBT-II cell lysate.



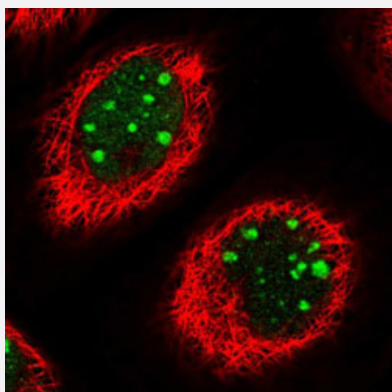
Immunohistochemistry (Formalin/PFA-fixed paraffin-embedded sections)

Immunohistochemical staining of human pancreas tissues.



Immunohistochemistry (Formalin/PFA-fixed paraffin-embedded sections)

Immunohistochemical staining of human testis.



Immunofluorescence

Immunofluorescent staining of A-431 cells.

Specification

Product Description	Rabbit polyclonal antibody raised against recombinant TBL3.
Immunogen	Recombinant protein corresponding to amino acids of human TBL3.
Sequence	LWKDVTEAEQAEEQARQEEQVVRQQELDNLLHEKRYLRALGLAISLDRPHTVLTVIQAIRRDPEACEKLEATMLRLRRDQKEALLRFCVTWNTNSRHCHEAQAVLGVL
Host	Rabbit
Reactivity	Human, Mouse, Rat
Form	Liquid
Purification	Antigen affinity purification
Isotype	IgG
Recommend Usage	Immunohistochemistry (1:200-1:500) Western Blot (0.04-0.4 ug/mL) Immunofluorescence (0.25-2 ug/mL) The optimal working dilution should be determined by the end user.
Storage Buffer	In PBS, pH 7.2, (40% glycerol, 0.02% sodium azide)
Storage Instruction	Store at 4°C. For long term storage store at -20°C. Aliquot to avoid repeated freezing and thawing.
Note	This product contains sodium azide: a POISONOUS AND HAZARDOUS SUBSTANCE which should be handled by trained staff only.

Applications

- Western Blot (Cell lysate)

Western blot analysis of Lane 1: NIH-3T3 cell lysate; Lane 2: NBT-II cell lysate.

- Immunohistochemistry (Formalin/PFA-fixed paraffin-embedded sections)

Immunohistochemical staining of human pancreas tissues.

- Immunohistochemistry (Formalin/PFA-fixed paraffin-embedded sections)

Immunohistochemical staining of human testis.

- Immunofluorescence

Immunofluorescent staining of A-431 cells.

Gene Info — TBL3

Entrez GeneID [10607](#)

Protein Accession# [Q12788](#)

Gene Name TBL3

Gene Alias SAZD

Gene Description transducin (beta)-like 3

Omim ID [605915](#)

Gene Ontology [Hyperlink](#)

Gene Summary

The protein encoded by this gene has sequence similarity with members of the WD40 repeat-containing protein family. The WD40 group is a large family of proteins, which appear to have a regulatory function. It is believed that the WD40 repeats mediate protein-protein interactions and members of the family are involved in signal transduction, RNA processing, gene regulation, vesicular trafficking, cytoskeletal assembly and may play a role in the control of cytotypic differentiation. This gene has multiple polyadenylation sites. It might have multiple alternatively spliced transcript variants but the variants have not been fully described yet. [provided by RefSeq]

Other Designations WD-repeat protein SAZD|transducin beta-like 3

Disease

- [Cerebral Hemorrhage](#)

- [Chronic Disease](#)
- [Genetic Predisposition to Disease](#)
- [Intracranial Hemorrhages](#)
- [Kidney Diseases](#)
- [Stroke](#)
- [Subarachnoid Hemorrhage](#)