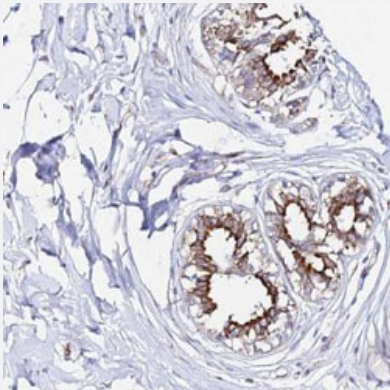


CCDC19 polyclonal antibody

Catalog # PAB27924 Size 100 uL

Applications



Immunohistochemistry (Formalin/PFA-fixed paraffin-embedded sections)

Immunohistochemical staining of human breast with CCDC19 polyclonal antibody (Cat # PAB27924) shows strong cytoplasmic and membranous positivity in glandular cells.

Specification

Product Description	Rabbit polyclonal antibody raised against recombinant CCDC19.
Immunogen	Recombinant protein corresponding to amino acids of human CCDC19.
Sequence	VDESLFGDIKSPAQQGQSDSPVLLRDKHTLQKTLTALGLDRKPETIQLITRDMVRELVPTEDPSTGE SLIISPEEFERIKWAS
Host	Rabbit
Reactivity	Human
Form	Liquid
Purification	Antigen affinity purification
Isotype	IgG
Recommend Usage	Immunohistochemistry (1:1000-1:2500) The optimal working dilution should be determined by the end user.
Storage Buffer	In PBS, pH 7.2, (40% glycerol, 0.02% sodium azide)

Storage Instruction

Store at 4°C. For long term storage store at -20°C.
Aliquot to avoid repeated freezing and thawing.

Note

This product contains sodium azide: a POISONOUS AND HAZARDOUS SUBSTANCE which should be handled by trained staff only.

Applications

- Immunohistochemistry (Formalin/PFA-fixed paraffin-embedded sections)

Immunohistochemical staining of human breast with CCDC19 polyclonal antibody (Cat # PAB27924) shows strong cytoplasmic and membranous positivity in glandular cells.

Gene Info — CCDC19

Entrez GeneID[25790](#)**Gene Name**

CCDC19

Gene Alias

NESG1

Gene Description

coiled-coil domain containing 19

Omim ID[605152](#)**Gene Ontology**[Hyperlink](#)**Other Designations**

OTTHUMP00000033461|nasopharyngeal epithelium specific protein 1|nasopharyngeal epithelium specific protein 1 (NESG1)