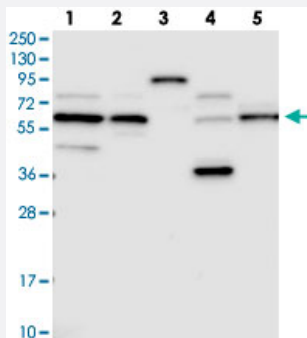


NAE1 polyclonal antibody

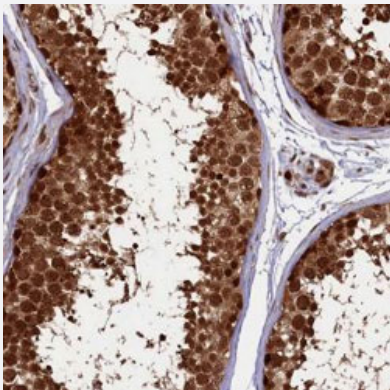
Catalog # PAB27920 Size 100 uL

Applications



Western Blot

Western blot analysis of Lane 1: RT-4, Lane 2: U-251 MG, Lane 3: Human Plasma, Lane 4: Liver, Lane 5: Tonsil with NAE1 polyclonal antibody (Cat # PAB27920).



Immunohistochemistry (Formalin/PFA-fixed paraffin-embedded sections)

Immunohistochemical staining of human testis with NAE1 polyclonal antibody (Cat # PAB27920) shows strong nuclear and cytoplasmic positivity in cells of seminiferous ducts.

Specification

Product Description	Rabbit polyclonal antibody raised against recombinant NAE1.
Immunogen	Recombinant protein corresponding to amino acids of human NAE1.
Sequence	KPFPELREHFQSYDLDHMEKKDHSHTPWVIAKYLAQWYSETNGRIPKTYKEKEDFRDLIRQGILK NENGAPEDDEENFEEAIKNVNTALNTTQIPSSIEDIFNDDR
Host	Rabbit
Reactivity	Human

Form	Liquid
Purification	Antigen affinity purification
Isotype	IgG
Recommend Usage	Immunohistochemistry (1:200-1:500) Western Blot (1:100-1:250) The optimal working dilution should be determined by the end user.
Storage Buffer	In PBS, pH 7.2, (40% glycerol, 0.02% sodium azide)
Storage Instruction	Store at 4°C. For long term storage store at -20°C. Aliquot to avoid repeated freezing and thawing.
Note	This product contains sodium azide: a POISONOUS AND HAZARDOUS SUBSTANCE which should be handled by trained staff only.

Applications

- Western Blot

Western blot analysis of Lane 1: RT-4, Lane 2: U-251 MG, Lane 3: Human Plasma, Lane 4: Liver, Lane 5: Tonsil with NAE1 polyclonal antibody (Cat # PAB27920).

- Immunohistochemistry (Formalin/PFA-fixed paraffin-embedded sections)

Immunohistochemical staining of human testis with NAE1 polyclonal antibody (Cat # PAB27920) shows strong nuclear and cytoplasmic positivity in cells of seminiferous ducts.

Gene Info — NAE1

Entrez GeneID	8883
Gene Name	NAE1
Gene Alias	A-116A10.1, APPBP1, HPP1, ula-1
Gene Description	NEDD8 activating enzyme E1 subunit 1
Omim ID	603385
Gene Ontology	Hyperlink

Gene Summary

The protein encoded by this gene binds to the beta-amyloid precursor protein. Beta-amyloid precursor protein is a cell surface protein with signal-transducing properties, and it is thought to play a role in the pathogenesis of Alzheimer's disease. In addition, the encoded protein can form a heterodimer with UBE1C and bind and activate NEDD8, a ubiquitin-like protein. This protein is required for cell cycle progression through the S/M checkpoint. Three transcript variants encoding different isoforms have been found for this gene. [provided by RefSeq]

Other Designations

NEDD8-activating enzyme E1 subunit|amyloid beta precursor protein binding protein 1, 59kDa|amyloid beta precursor protein-binding protein 1, 59kD|amyloid protein-binding protein 1|protooncogene protein 1