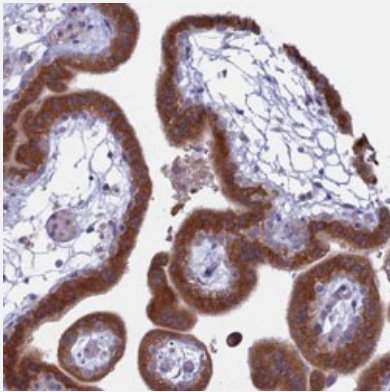


TMEM208 polyclonal antibody

Catalog # PAB27915 Size 100 uL

Applications



Immunohistochemistry (Formalin/PFA-fixed paraffin-embedded sections)

Immunohistochemical staining of human placenta with TMEM208 polyclonal antibody (Cat # PAB27915) shows strong cytoplasmic positivity in trophoblastic cells at 1:20-1:50 dilution.

Specification

Product Description	Rabbit polyclonal antibody raised against recombinant TMEM208.
Immunogen	Recombinant protein corresponding to amino acids of human TMEM208.
Sequence	SYHSMSSMARAAFSEDGALMDGGMDLNMEQGMAEHLKDV
Host	Rabbit
Reactivity	Human
Form	Liquid
Purification	Antigen affinity purification
Isotype	IgG
Recommend Usage	Immunohistochemistry (1:20-1:50) The optimal working dilution should be determined by the end user.
Storage Buffer	In PBS, pH 7.2 (40% glycerol, 0.02% sodium azide)

Storage Instruction

Store at 4°C. For long term storage store at -20°C.
Aliquot to avoid repeated freezing and thawing.

Note

This product contains sodium azide: a POISONOUS AND HAZARDOUS SUBSTANCE which should be handled by trained staff only.

Applications

- Immunohistochemistry (Formalin/PFA-fixed paraffin-embedded sections)

Immunohistochemical staining of human placenta with TMEM208 polyclonal antibody (Cat # PAB27915) shows strong cytoplasmic positivity in trophoblastic cells at 1:20-1:50 dilution.

Gene Info — TMEM208

Entrez GeneID [29100](#)

Gene Name TMEM208

Gene Alias HSPC171

Gene Description transmembrane protein 208

Gene Ontology [Hyperlink](#)

Other Designations HSPC171 protein