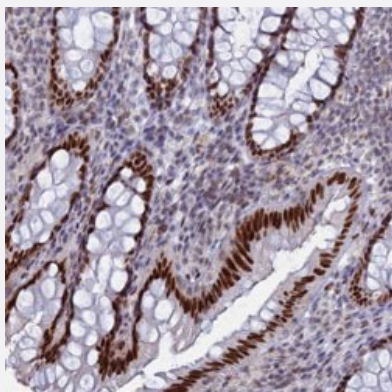


C20orf112 polyclonal antibody

Catalog # PAB27908 Size 100 uL

Applications



Immunohistochemistry (Formalin/PFA-fixed paraffin-embedded sections)

Immunohistochemical staining of human rectum with C20orf112 polyclonal antibody (Cat # PAB27908) shows strong nuclear positivity in glandular cells.

Specification

Product Description	Rabbit polyclonal antibody raised against recombinant C20orf112.
Immunogen	Recombinant protein corresponding to amino acids of human C20orf112.
Sequence	SDGCGADGLRSRVKYGVKTTPEPPYSSGSYDSIKTEVSGCPEDLTVGRAPTADDDDDHDDH EDNDKMNDSEGMDPERL
Host	Rabbit
Reactivity	Human
Form	Liquid
Purification	Antigen affinity purification
Isotype	IgG
Recommend Usage	Immunohistochemistry (1:200-1:500) The optimal working dilution should be determined by the end user.
Storage Buffer	In PBS, pH 7.2, (40% glycerol, 0.02% sodium azide)

Storage Instruction

Store at 4°C. For long term storage store at -20°C.
Aliquot to avoid repeated freezing and thawing.

Note

This product contains sodium azide: a POISONOUS AND HAZARDOUS SUBSTANCE which should be handled by trained staff only.

Applications

- Immunohistochemistry (Formalin/PFA-fixed paraffin-embedded sections)

Immunohistochemical staining of human rectum with C20orf112 polyclonal antibody (Cat # PAB27908) shows strong nuclear positivity in glandular cells.

Gene Info — C20orf112

Entrez GeneID[140688](#)**Gene Name**

C20orf112

Gene Alias

C20orf113, DKFZp566G1424, dJ1184F4.2, dJ1184F4.4

Gene Description

chromosome 20 open reading frame 112

Gene Ontology[Hyperlink](#)**Other Designations**

OTTHUMP00000030594|hypothetical protein LOC140688