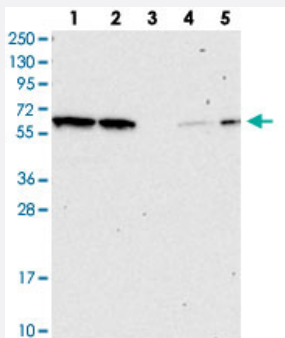


# NAE1 polyclonal antibody

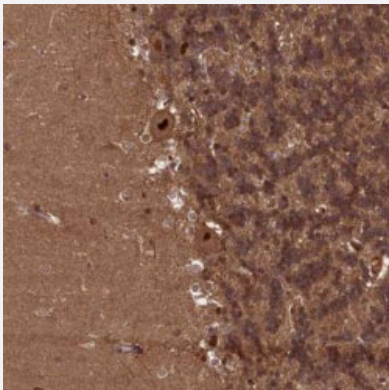
Catalog # PAB27899      Size 100 uL

## Applications



### Western Blot

Western blot analysis of Lane 1: RT-4, Lane 2: U-251 MG, Lane 3: Human Plasma, Lane 4: Liver, Lane 5: Tonsil with NAE1 polyclonal antibody (Cat # PAB27899).



### Immunohistochemistry (Formalin/PFA-fixed paraffin-embedded sections)

Immunohistochemical staining of human cerebellum with NAE1 polyclonal antibody (Cat # PAB27899) shows strong nuclear positivity in Purkinje cells.

## Specification

<b>Product Description</b>	Rabbit polyclonal antibody raised against recombinant NAE1.
<b>Immunogen</b>	Recombinant protein corresponding to amino acids of human NAE1.
<b>Sequence</b>	PSFWILARALKEFVAKEGQGNLPVRGTIPDMIADSGKYIKLQNVYREKAKKDAAAVGNHVAKLLQS IGQAPESISEKELKLLCSNSAFLRVVRCRSLAEEYGLDTINKDE
<b>Host</b>	Rabbit
<b>Reactivity</b>	Human

Form	Liquid
Purification	Antigen affinity purification
Isotype	IgG
Recommend Usage	Immunohistochemistry (1:200-1:500) Western Blot (1:100-1:250) The optimal working dilution should be determined by the end user.
Storage Buffer	In PBS, pH 7.2, (40% glycerol, 0.02% sodium azide)
Storage Instruction	Store at 4°C. For long term storage store at -20°C. Aliquot to avoid repeated freezing and thawing.
Note	This product contains sodium azide: a POISONOUS AND HAZARDOUS SUBSTANCE which should be handled by trained staff only.

## Applications

- Western Blot

Western blot analysis of Lane 1: RT-4, Lane 2: U-251 MG, Lane 3: Human Plasma, Lane 4: Liver, Lane 5: Tonsil with NAE1 polyclonal antibody (Cat # PAB27899).

- Immunohistochemistry (Formalin/PFA-fixed paraffin-embedded sections)

Immunohistochemical staining of human cerebellum with NAE1 polyclonal antibody (Cat # PAB27899) shows strong nuclear positivity in Purkinje cells.

## Gene Info — NAE1

Entrez GeneID	<a href="#">8883</a>
Gene Name	NAE1
Gene Alias	A-116A10.1, APPBP1, HPP1, ula-1
Gene Description	NEDD8 activating enzyme E1 subunit 1
Omim ID	<a href="#">603385</a>
Gene Ontology	<a href="#">Hyperlink</a>

**Gene Summary**

The protein encoded by this gene binds to the beta-amyloid precursor protein. Beta-amyloid precursor protein is a cell surface protein with signal-transducing properties, and it is thought to play a role in the pathogenesis of Alzheimer's disease. In addition, the encoded protein can form a heterodimer with UBE1C and bind and activate NEDD8, a ubiquitin-like protein. This protein is required for cell cycle progression through the S/M checkpoint. Three transcript variants encoding different isoforms have been found for this gene. [provided by RefSeq]

**Other Designations**

NEDD8-activating enzyme E1 subunit|amyloid beta precursor protein binding protein 1, 59kDa|amyloid beta precursor protein-binding protein 1, 59kD|amyloid protein-binding protein 1|protooncogene protein 1