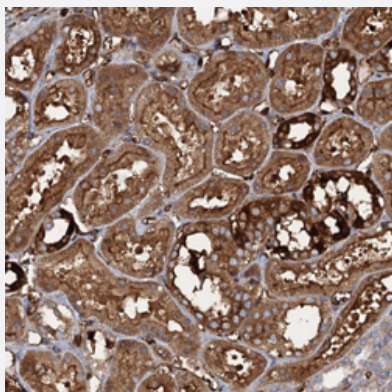


CCDC81 polyclonal antibody

Catalog # PAB27881 Size 100 uL

Applications



Immunohistochemistry (Formalin/PFA-fixed paraffin-embedded sections)

Immunohistochemical staining of human kidney with CCDC81 polyclonal antibody (Cat # PAB27881) shows strong cytoplasmic and membranous positivity in cells of tubules.

Specification

Product Description	Rabbit polyclonal antibody raised against recombinant CCDC81.
Immunogen	Recombinant protein corresponding to amino acids of human CCDC81.
Sequence	NHKNEKPEFYKSFLDKRPLSPALNALKQEEYSRSLKQMDNRQENEIKQRQYRELMRLEQVQ LTEELAAQRAKFLKDKMEETQCYKRALDAQIKNKPSRL
Host	Rabbit
Reactivity	Human
Form	Liquid
Purification	Antigen affinity purification
Isotype	IgG
Recommend Usage	Immunohistochemistry (1:200-1:500) The optimal working dilution should be determined by the end user.
Storage Buffer	In PBS, pH 7.2 (40% glycerol, 0.02% sodium azide)

Storage Instruction

Store at 4°C. For long term storage store at -20°C.
Aliquot to avoid repeated freezing and thawing.

Note

This product contains sodium azide: a POISONOUS AND HAZARDOUS SUBSTANCE which should be handled by trained staff only.

Applications

- Immunohistochemistry (Formalin/PFA-fixed paraffin-embedded sections)

Immunohistochemical staining of human kidney with CCDC81 polyclonal antibody (Cat # PAB27881) shows strong cytoplasmic and membranous positivity in cells of tubules.

Gene Info — CCDC81

Entrez GeneID[60494](#)**Gene Name**

CCDC81

Gene Alias

FLJ16339, FLJ23514

Gene Description

coiled-coil domain containing 81

Gene Ontology[Hyperlink](#)**Other Designations**

-