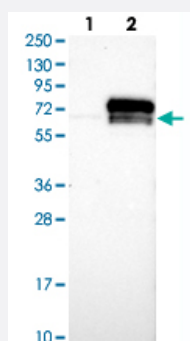


KDELC2 polyclonal antibody

Catalog # PAB27866

Size 100 uL

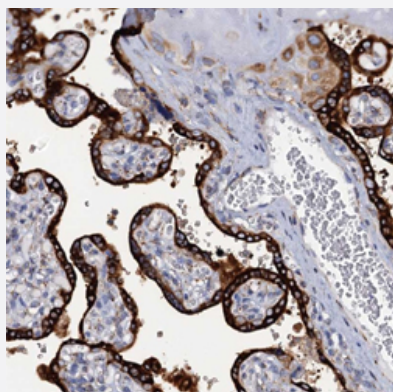
Applications



Western Blot (Transfected lysate)

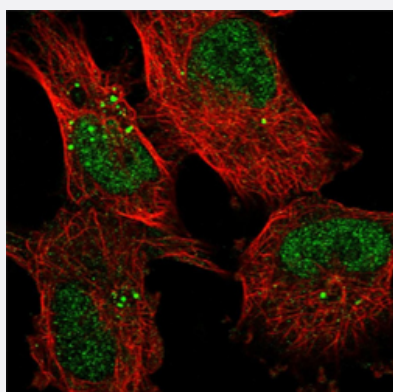
Western blot analysis of Lane 1: Negative control (vector only transfected HEK293T lysate).

Lane 2: Over-expression Lysate (Co-expressed with a C-terminal myc-DDK tag (~3.1 kDa) in mammalian HEK293T cells, LY406972) with KDELC2 polyclonal antibody (Cat # PAB27866) at 1:100-1:250 dilution.



Immunohistochemistry (Formalin/PFA-fixed paraffin-embedded sections)

Immunohistochemical staining of human placenta with KDELC2 polyclonal antibody (Cat # PAB27866) shows strong cytoplasmic positivity in trophoblastic cells at 1:500-1:1000 dilution.



Immunofluorescence

Immunofluorescent staining of human cell line U-251 MG with KDELC2 polyclonal antibody (Cat # PAB27866) at 1-4 ug/mL dilution shows positivity in nucleus but not nucleoli & vesicles.

Specification

Product Description	Rabbit polyclonal antibody raised against recombinant KDELC2.
Immunogen	Recombinant protein corresponding to amino acids of human KDELC2.
Sequence	YHEYCECPEDPQAWQKTLSCPTKEPQIAKDFASFPSINLQQMLKEVPKRFGDERGANHYTILNNH VYRRSLGKYTDFKMFSEI
Host	Rabbit
Reactivity	Human
Form	Liquid
Purification	Antigen affinity purification
Isotype	IgG
Recommend Usage	Immunohistochemistry (1:500-1:1000) Western Blot (1:100-1:250) Immunofluorescence (1-4 ug/mL) The optimal working dilution should be determined by the end user.
Storage Buffer	In PBS, pH 7.2, (40% glycerol, 0.02% sodium azide)
Storage Instruction	Store at 4°C. For long term storage store at -20°C. Aliquot to avoid repeated freezing and thawing.
Note	This product contains sodium azide: a POISONOUS AND HAZARDOUS SUBSTANCE which should be handled by trained staff only.

Applications

- Western Blot (Transfected lysate)

Western blot analysis of Lane 1: Negative control (vector only transfected HEK293T lysate).
Lane 2: Over-expression Lysate (Co-expressed with a C-terminal myc-DDK tag (~3.1 kDa) in mammalian HEK293T cells, LY406972) with KDELC2 polyclonal antibody (Cat # PAB27866) at 1:100-1:250 dilution.

- Immunohistochemistry (Formalin/PFA-fixed paraffin-embedded sections)

Immunohistochemical staining of human placenta with KDELC2 polyclonal antibody (Cat # PAB27866) shows strong cytoplasmic positivity in trophoblastic cells at 1:500-1:1000 dilution.

- Immunofluorescence

Immunofluorescent staining of human cell line U-251 MG with KDELC2 polyclonal antibody (Cat # PAB27866) at 1-4 ug/mL dilution shows positivity in nucleus but not nucleoli & vesicles.

Gene Info — KDELC2

Entrez GeneID	143888
---------------	------------------------

Gene Name	KDELC2
-----------	--------

Gene Alias	MGC33424
------------	----------

Gene Description	KDEL (Lys-Asp-Glu-Leu) containing 2
------------------	-------------------------------------

Gene Ontology	Hyperlink
---------------	---------------------------

Other Designations	-
--------------------	---