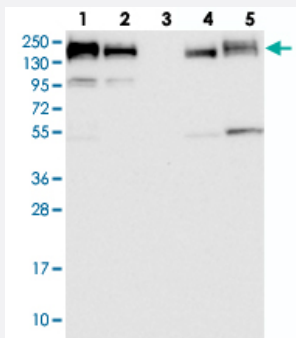


GOLGA3 polyclonal antibody

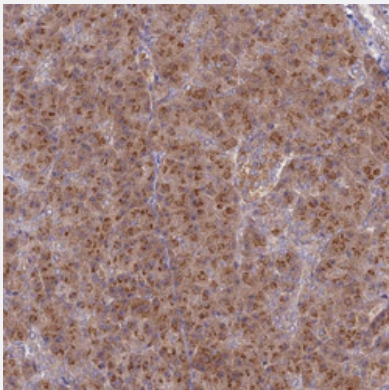
Catalog # PAB27865 Size 100 uL

Applications



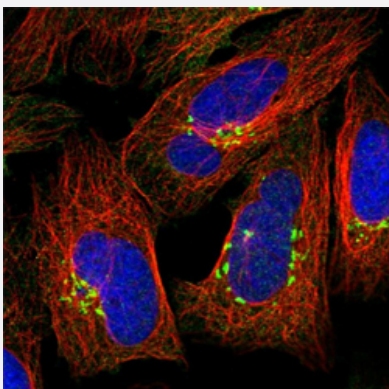
Western Blot

Western blot analysis of Lane 1: RT-4, Lane 2: U-251 MG, Lane 3: Human Plasma, Lane 4: Liver, Lane 5: Tonsil with GOLGA3 polyclonal antibody (Cat # PAB27865) at 1:100-1:250 dilution.



Immunohistochemistry (Formalin/PFA-fixed paraffin-embedded sections)

Immunohistochemical staining of human pancreas with GOLGA3 polyclonal antibody (Cat # PAB27865) shows strong cytoplasmic positivity in exocrine glandular cells at 1:500-1:1000 dilution.



Immunofluorescence

Immunofluorescent staining of human cell line U-2 OS with GOLGA3 polyclonal antibody (Cat # PAB27865) at 1-4 ug/mL dilution shows positivity in golgi apparatus.

Specification

Product Description	Rabbit polyclonal antibody raised against recombinant GOLGA3.
Immunogen	Recombinant protein corresponding to amino acids of human GOLGA3.
Sequence	STRGTYGILSKTVGTQDTPYMVNGQEIPADTLGQFPSIKDVLQAAAAEHQDQGQEVNGEVRSRRD SICSSVSLESSAAETQEEMQLQVLKEKMRLEG
Host	Rabbit
Reactivity	Human
Form	Liquid
Purification	Antigen affinity purification
Isotype	IgG
Recommend Usage	Immunohistochemistry (1:500-1:1000) Western Blot (1:100-1:250) Immunofluorescence (1-4 ug/mL) The optimal working dilution should be determined by the end user.
Storage Buffer	In PBS, pH 7.2, (40% glycerol, 0.02% sodium azide)
Storage Instruction	Store at 4°C. For long term storage store at -20°C. Aliquot to avoid repeated freezing and thawing.
Note	This product contains sodium azide: a POISONOUS AND HAZARDOUS SUBSTANCE which should be handled by trained staff only.

Applications

- Western Blot

Western blot analysis of Lane 1: RT-4, Lane 2: U-251 MG, Lane 3: Human Plasma, Lane 4: Liver, Lane 5: Tonsil with GOLGA3 polyclonal antibody (Cat # PAB27865) at 1:100-1:250 dilution.

- Immunohistochemistry (Formalin/PFA-fixed paraffin-embedded sections)

Immunohistochemical staining of human pancreas with GOLGA3 polyclonal antibody (Cat # PAB27865) shows strong cytoplasmic positivity in exocrine glandular cells at 1:500-1:1000 dilution.

- Immunofluorescence

Immunofluorescent staining of human cell line U-2 OS with GOLGA3 polyclonal antibody (Cat # PAB27865) at 1-4 ug/mL dilution shows positivity in golgi apparatus.

Gene Info — GOLGA3

Entrez GeneID [2802](#)**Gene Name** GOLGA3**Gene Alias** GCP170, MEA-2**Gene Description** golgi autoantigen, golgin subfamily a, 3**Omim ID** [602581](#)**Gene Ontology** [Hyperlink](#)

Gene Summary

The Golgi apparatus, which participates in glycosylation and transport of proteins and lipids in the secretory pathway, consists of a series of stacked cisternae (flattened membrane sacs). Interactions between the Golgi and microtubules are thought to be important for the reorganization of the Golgi after it fragments during mitosis. This gene encodes a member of the golgin family of proteins which are localized to the Golgi. Its encoded protein has been postulated to play a role in nuclear transport and Golgi apparatus localization. Several alternatively spliced transcript variants of this gene have been described, but the full-length nature of these variants has not been determined. [provided by RefSeq]

Other Designations Golgi autoantigen, golgin subfamily a, 3|Golgi complex-associated protein of 170 kD|Golgi membrane associated protein|Golgi peripheral membrane protein|SY2/SY10 protein|golgin-160|golgin-165|male enhanced antigen-2

Disease

- [Tobacco Use Disorder](#)