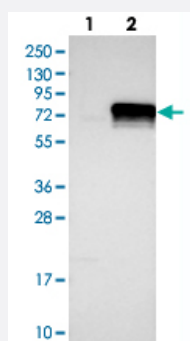


# KDEL C2 polyclonal antibody

Catalog # PAB27861      Size 100 uL

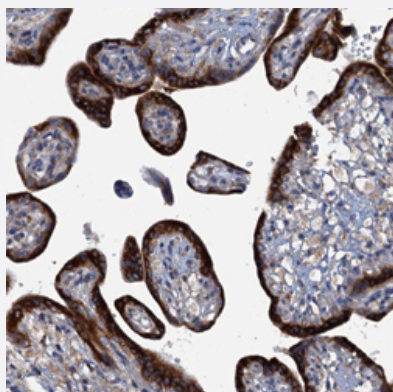
## Applications



### Western Blot (Transfected lysate)

Western blot analysis of Lane 1: Negative control (vector only transfected HEK293T lysate).

Lane 2: Over-expression Lysate (Co-expressed with a C-terminal myc-DDK tag (~3.1 kDa) in mammalian HEK293T cells, LY406972) with KDEL C2 polyclonal antibody (Cat # PAB27861).



### Immunohistochemistry (Formalin/PFA-fixed paraffin-embedded sections)

Immunohistochemical staining of human placenta with KDEL C2 polyclonal antibody (Cat # PAB27861) shows strong cytoplasmic positivity in trophoblastic cells.

## Specification

Product Description	Rabbit polyclonal antibody raised against recombinant KDEL C2.
Immunogen	Recombinant protein corresponding to amino acids of human KDEL C2.
Sequence	LPVRYFYLAQAVNSEGQNLTRSPAGETPFKVVVKSLSPKELVRIHVPKPLDRNDGTFLMRYRMYET VDEGLKIEVLYGDEHVAQ
Host	Rabbit
Reactivity	Human

Form	Liquid
Purification	Antigen affinity purification
Isotype	IgG
Recommend Usage	Immunohistochemistry (1:500-1:1000) Western Blot (1:100-1:250) The optimal working dilution should be determined by the end user.
Storage Buffer	In PBS, pH 7.2, (40% glycerol, 0.02% sodium azide)
Storage Instruction	Store at 4°C. For long term storage store at -20°C. Aliquot to avoid repeated freezing and thawing.
Note	This product contains sodium azide: a POISONOUS AND HAZARDOUS SUBSTANCE which should be handled by trained staff only.

## Applications

- Western Blot (Transfected lysate)

Western blot analysis of Lane 1: Negative control (vector only transfected HEK293T lysate).

Lane 2: Over-expression Lysate (Co-expressed with a C-terminal myc-DDK tag (~3.1 kDa) in mammalian HEK293T cells, LY406972) with KDELC2 polyclonal antibody (Cat # PAB27861).

- Immunohistochemistry (Formalin/PFA-fixed paraffin-embedded sections)

Immunohistochemical staining of human placenta with KDELC2 polyclonal antibody (Cat # PAB27861) shows strong cytoplasmic positivity in trophoblastic cells.

## Gene Info — KDELC2

Entrez GeneID	<a href="#">143888</a>
Gene Name	KDELC2
Gene Alias	MGC33424
Gene Description	KDEL (Lys-Asp-Glu-Leu) containing 2
Gene Ontology	<a href="#">Hyperlink</a>
Other Designations	-