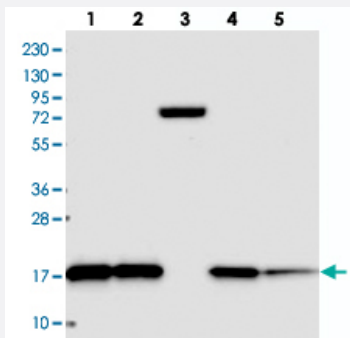


CNPY2 polyclonal antibody

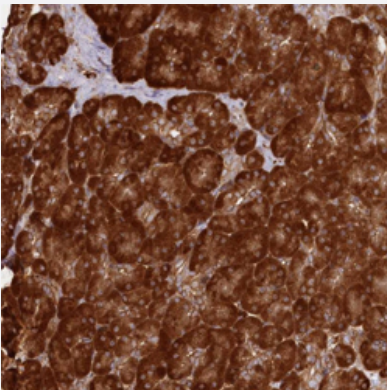
Catalog # PAB27855 Size 100 uL

Applications



Western Blot

Western blot analysis of Lane 1: RT-4, Lane 2: U-251 MG, Lane 3: Human Plasma, Lane 4: Liver, Lane 5: Tonsil with CNPY2 polyclonal antibody (Cat # PAB27855).



Immunohistochemistry (Formalin/PFA-fixed paraffin-embedded sections)

Immunohistochemical staining of human pancreas with CNPY2 polyclonal antibody (Cat # PAB27855) shows strong cytoplasmic positivity in exocrine glandular cells.

Specification

Product Description	Rabbit polyclonal antibody raised against recombinant CNPY2.
Immunogen	Recombinant protein corresponding to amino acids of human CNPY2.
Sequence	SGTLKFACESVVEEYEDELIEFFSREADNVKDKLCSKRTDLCDHALHISHDEL
Host	Rabbit
Reactivity	Human
Form	Liquid

Purification	Antigen affinity purification
Isotype	IgG
Recommend Usage	Immunohistochemistry (1:1000-1:2500) Western Blot (1:100-1:250) The optimal working dilution should be determined by the end user.
Storage Buffer	In PBS, pH 7.2, (40% glycerol, 0.02% sodium azide)
Storage Instruction	Store at 4°C. For long term storage store at -20°C. Aliquot to avoid repeated freezing and thawing.
Note	This product contains sodium azide: a POISONOUS AND HAZARDOUS SUBSTANCE which should be handled by trained staff only.

Applications

- Western Blot

Western blot analysis of Lane 1: RT-4, Lane 2: U-251 MG, Lane 3: Human Plasma, Lane 4: Liver, Lane 5: Tonsil with CNPY2 polyclonal antibody (Cat # PAB27855).

- Immunohistochemistry (Formalin/PFA-fixed paraffin-embedded sections)

Immunohistochemical staining of human pancreas with CNPY2 polyclonal antibody (Cat # PAB27855) shows strong cytoplasmic positivity in exocrine glandular cells.

Gene Info — CNPY2

Entrez GeneID	10330
Gene Name	CNPY2
Gene Alias	HP10390, MSAP, TMEM4, ZSIG9
Gene Description	canopy 2 homolog (zebrafish)
Omim ID	605861
Gene Ontology	Hyperlink
Other Designations	MIR-interacting saposin-like protein canopy 2 homolog transmembrane protein 4

Disease

- [Celiac Disease](#)
- [Genetic Predisposition to Disease](#)