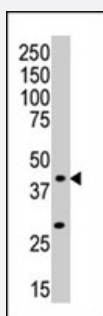


MAPK11 polyclonal antibody

Catalog # PAB2785

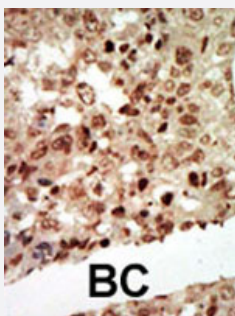
Size 400 uL

Applications



Western Blot (Tissue lysate)

Western blot analysis of MAPK11 polyclonal antibody (Cat # PAB2785) in mouse brain tissue lysate. MAPK11 (arrow) was detected using purified polyclonal antibody. Secondary HRP-anti-rabbit was used for signal visualization with chemiluminescence.



Immunohistochemistry (Formalin/PFA-fixed paraffin-embedded sections)

Formalin-fixed and paraffin-embedded human cancer tissue reacted with MAPK11 polyclonal antibody (Cat # PAB2785), which was peroxidase-conjugated to the secondary antibody, followed by AEC staining. This data demonstrates the use of this antibody for immunohistochemistry; clinical relevance has not been evaluated. BC = breast carcinoma.

Specification

Product Description	Rabbit polyclonal antibody raised against synthetic peptide of MAPK11.
Immunogen	A synthetic peptide (conjugated with KLH) corresponding to internal region of human MAPK11.
Host	Rabbit
Reactivity	Human, Mouse
Form	Liquid
Purification	Protein G purification

Recommend Usage	Western Blot (1:1000) Immunohistochemistry (1:50-100) The optimal working dilution should be determined by the end user.
Storage Buffer	In PBS (0.09% sodium azide)
Storage Instruction	Store at 4°C. For long term storage store at -20°C. Aliquot to avoid repeated freezing and thawing.
Note	This product contains sodium azide: a POISONOUS AND HAZARDOUS SUBSTANCE which should be handled by trained staff only.

Applications

- Western Blot (Tissue lysate)

Western blot analysis of MAPK11 polyclonal antibody (Cat # PAB2785) in mouse brain tissue lysate. MAPK11 (arrow) was detected using purified polyclonal antibody. Secondary HRP-anti-rabbit was used for signal visualization with chemiluminescence.

- Immunohistochemistry (Formalin/PFA-fixed paraffin-embedded sections)

Formalin-fixed and paraffin-embedded human cancer tissue reacted with MAPK11 polyclonal antibody (Cat # PAB2785), which was peroxidase-conjugated to the secondary antibody, followed by AEC staining. This data demonstrates the use of this antibody for immunohistochemistry; clinical relevance has not been evaluated. BC = breast carcinoma.

Gene Info — MAPK11

Entrez GeneID	5600
Protein Accession#	MK11_HUMAN
Gene Name	MAPK11
Gene Alias	P38B, P38BETA2, PRKM11, SAPK2, SAPK2B, p38-2, p38Beta
Gene Description	mitogen-activated protein kinase 11
Omim ID	602898
Gene Ontology	Hyperlink

Gene Summary

The protein encoded by this gene is a member of the MAP kinase family. MAP kinases act as an integration point for multiple biochemical signals, and are involved in a wide variety of cellular processes such as proliferation, differentiation, transcription regulation, and development. This kinase is most closely related to p38 MAP kinase, both of which can be activated by proinflammatory cytokines and environmental stress. This kinase is activated through its phosphorylation by MAP kinase kinases (MKKs), preferably by MKK6. Transcription factor ATF2/CREB2 has been shown to be a substrate of this kinase. [provided by RefSeq]

Other Designations

OTTHUMP00000196655|mitogen-activated protein kinase p38 beta|mitogen-activated protein kinase p38-2|stress-activated protein kinase-2|stress-activated protein kinase-2b

Publication Reference

- [Generation and initial analysis of more than 15,000 full-length human and mouse cDNA sequences.](#)

Strausberg RL, Feingold EA, Grouse LH, Derge JG, Klausner RD, Collins FS, Wagner L, Shenmen CM, Schuler GD, Altschul SF, Zeeberg B, Buetow KH, Schaefer CF, Bhat NK, Hopkins RF, Jordan H, Moore T, Max SI, Wang J, Hsieh F, Diatchenko L, Marusina K, Farmer AA, Rubin GM, Hong L, Stapleton M, Soares MB, Bonaldo MF, Casavant TL, Scheetz TE, Brownstein MJ, Usdin TB, Toshiyuki S, Caminci P, Prange C, Raha SS, Loquellano NA, Peters GJ, Abramson RD, Mullahy SJ, Bosak SA, McEwan PJ, McKernan KJ, Malek JA,
PNAS 2002 Dec; 99(26):16899.

- [The DNA sequence of human chromosome 22.](#)

Dunham I, Shimizu N, Roe BA, Chissole S, Hunt AR, Collins JE, Bruskiewich R, Beare DM, Clamp M, Smink LJ, Ainscough R, Almeida JP, Babbage A, Bagguley C, Bailey J, Barlow K, Bates KN, Beasley O, Bird CP, Blakey S, Bridgeman AM, Buck D, Burgess J, Burrill WD, O'Brien KP, et al..
Nature 1999 Dec; 402(6761):489.

- [Selective activation of p38 mitogen-activated protein \(MAP\) kinase isoforms by the MAP kinase kinases MKK3 and MKK6.](#)

Enslen H, Raingeaud J, Davis RJ.
The Journal of Biological Chemistry 1998 Jan; 273(3):1741.

Pathway

- [Amyotrophic lateral sclerosis \(ALS\)](#)
- [Epithelial cell signaling in Helicobacter pylori infection](#)
- [Fc epsilon RI signaling pathway](#)
- [GnRH signaling pathway](#)

- [Leukocyte transendothelial migration](#)
- [MAPK signaling pathway](#)
- [Neurotrophin signaling pathway](#)
- [T cell receptor signaling pathway](#)
- [Toll-like receptor signaling pathway](#)
- [VEGF signaling pathway](#)

Disease

- [Cardiovascular Diseases](#)
- [Diabetes Mellitus](#)
- [Edema](#)
- [HIV Infections](#)