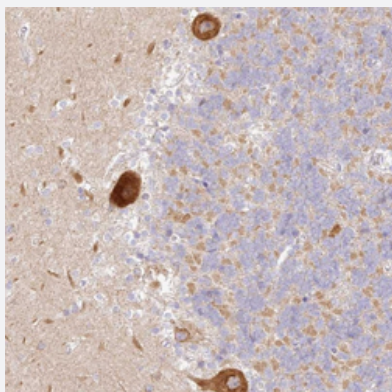


LRRC15 polyclonal antibody

Catalog # PAB27848

Size 100 uL

Applications



Immunohistochemistry (Formalin/PFA-fixed paraffin-embedded sections)

Immunohistochemical staining of human cerebellum with LRRC15 polyclonal antibody (Cat # PAB27848) shows strong cytoplasmic positivity in Purkinje cells at 1:20-1:50 dilution.

Specification

| | |
|---------------------|--------------------------------------------------------------------------------------------------------|
| Product Description | Rabbit polyclonal antibody raised against recombinant LRRC15. |
| Immunogen | Recombinant protein corresponding to amino acids of human LRRC15. |
| Sequence | NWLLLNQPRLGTDTPVCFSPANVRGQSLIIINNVNAVPSVHVPEVPSYPETPWYPDTPSYDPTS VSSTELTSPVEDYDLDLTIQVTDDRSVW |
| Host | Rabbit |
| Reactivity | Human |
| Form | Liquid |
| Purification | Antigen affinity purification |
| Isotype | IgG |
| Recommend Usage | Immunohistochemistry (1:20-1:50) The optimal working dilution should be determined by the end user. |
| Storage Buffer | In PBS, pH 7.2 (40% glycerol, 0.02% sodium azide) |

Storage Instruction

Store at 4°C. For long term storage store at -20°C.
Aliquot to avoid repeated freezing and thawing.

Note

This product contains sodium azide: a POISONOUS AND HAZARDOUS SUBSTANCE which should be handled by trained staff only.

Applications

- Immunohistochemistry (Formalin/PFA-fixed paraffin-embedded sections)

Immunohistochemical staining of human cerebellum with LRRC15 polyclonal antibody (Cat # PAB27848) shows strong cytoplasmic positivity in Purkinje cells at 1:20-1:50 dilution.

Gene Info — LRRC15

Entrez GeneID [131578](#)

Gene Name LRRC15

Gene Alias LIB

Gene Description leucine rich repeat containing 15

Gene Ontology [Hyperlink](#)

Other Designations leucine-rich repeat protein induced by beta amyloid