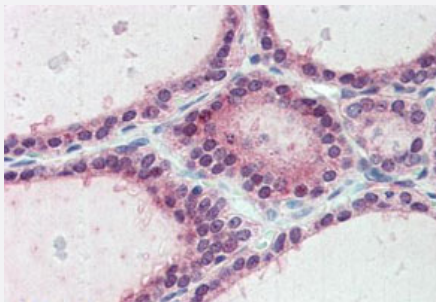


# FAM62A polyclonal antibody

Catalog # PAB27840

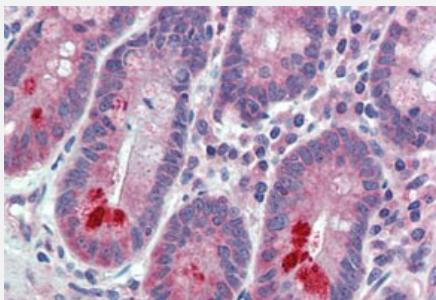
Size 50 ug

## Applications



### Immunohistochemistry (Formalin/PFA-fixed paraffin-embedded sections)

Immunohistochemistry (Formalin/PFA-fixed paraffin-embedded sections) of human thyroid tissue with FAM62A polyclonal antibody (Cat # PAB27840). Immunohistochemistry of formalin-fixed, paraffin-embedded tissue after heat-induced antigen retrieval.



### Immunohistochemistry (Formalin/PFA-fixed paraffin-embedded sections)

Immunohistochemistry (Formalin/PFA-fixed paraffin-embedded sections) of human small intestine tissue with FAM62A polyclonal antibody (Cat # PAB27840). Immunohistochemistry of formalin-fixed, paraffin-embedded tissue after heat-induced antigen retrieval.

## Specification

<b>Product Description</b>	Rabbit polyclonal antibody raised against synthetic peptide of FAM62A.
<b>Immunogen</b>	A synthetic peptide corresponding to 17 amino acid at internal region of human FAM62A.
<b>Host</b>	Rabbit
<b>Reactivity</b>	Bovine, Guinea pig, Horse, Human, Monkey, Mouse, Pig, Rabbit, Rat
<b>Specificity</b>	BLAST analysis of the peptide immunogen showed no homology with other human proteins, except ESYT2 (65%).
<b>Form</b>	Liquid

<b>Purification</b>	Immunoaffinity chromatography
<b>Recommend Usage</b>	Immunohistochemistry (Formalin/PFA-fixed paraffin-embedded sections) (10 ug/mL) The optimal working dilution should be determined by the end user.
<b>Storage Buffer</b>	In PBS (0.09% sodium azide)
<b>Storage Instruction</b>	Store at 4°C. For long term storage store at -80°C. Aliquot to avoid repeated freezing and thawing.
<b>Note</b>	This product contains sodium azide: a POISONOUS AND HAZARDOUS SUBSTANCE which should be handled by trained staff only.

## Applications

- Immunohistochemistry (Formalin/PFA-fixed paraffin-embedded sections)

Immunohistochemistry (Formalin/PFA-fixed paraffin-embedded sections) of human thyroid tissue with FAM62A polyclonal antibody (Cat # PAB27840). Immunohistochemistry of formalin-fixed, paraffin-embedded tissue after heat-induced antigen retrieval.

- Immunohistochemistry (Formalin/PFA-fixed paraffin-embedded sections)

Immunohistochemistry (Formalin/PFA-fixed paraffin-embedded sections) of human small intestine tissue with FAM62A polyclonal antibody (Cat # PAB27840). Immunohistochemistry of formalin-fixed, paraffin-embedded tissue after heat-induced antigen retrieval.

## Gene Info — FAM62A

<b>Entrez GeneID</b>	<a href="#">23344</a>
<b>Protein Accession#</b>	<a href="#">Q9BSJ8</a>
<b>Gene Name</b>	FAM62A
<b>Gene Alias</b>	KIAA0747, MBC2
<b>Gene Description</b>	family with sequence similarity 62 (C2 domain containing), member A
<b>Gene Ontology</b>	<a href="#">Hyperlink</a>
<b>Gene Summary</b>	O
<b>Other Designations</b>	-