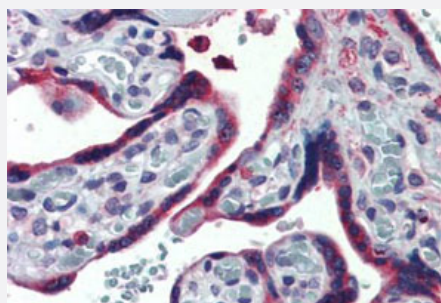


TXNDC4 polyclonal antibody

Catalog # PAB27839

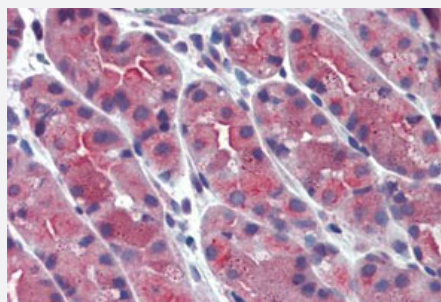
Size 50 ug

Applications



Immunohistochemistry (Formalin/PFA-fixed paraffin-embedded sections)

Immunohistochemistry (Formalin/PFA-fixed paraffin-embedded sections) of human placenta tissue with TXNDC4 polyclonal antibody (Cat # PAB27839). Immunohistochemistry of formalin-fixed, paraffin-embedded tissue after heat-induced antigen retrieval.



Immunohistochemistry (Formalin/PFA-fixed paraffin-embedded sections)

Immunohistochemistry (Formalin/PFA-fixed paraffin-embedded sections) of human stomach tissue with TXNDC4 polyclonal antibody (Cat # PAB27839). Immunohistochemistry of formalin-fixed, paraffin-embedded tissue after heat-induced antigen retrieval.

Specification

Product Description	Rabbit polyclonal antibody raised against synthetic peptide of TXNDC4.
Immunogen	A synthetic peptide corresponding to 20 amino acid at internal region of human TXNDC4.
Host	Rabbit
Reactivity	Bovine, Chicken, Dog, Guinea pig, Horse, Human, Monkey, Mouse, Pig, Rabbit, Rat
Specificity	BLAST analysis of the peptide immunogen showed no homology with other human proteins.
Form	Liquid
Purification	Immunoaffinity chromatography

Recommend Usage	Immunohistochemistry (Formalin/PFA-fixed paraffin-embedded sections) (15-20 ug/mL) The optimal working dilution should be determined by the end user.
Storage Buffer	In PBS (0.09% sodium azide)
Storage Instruction	Store at 4°C. For long term storage store at -80°C. Aliquot to avoid repeated freezing and thawing.
Note	This product contains sodium azide: a POISONOUS AND HAZARDOUS SUBSTANCE which should be handled by trained staff only.

Applications

- Immunohistochemistry (Formalin/PFA-fixed paraffin-embedded sections)

Immunohistochemistry (Formalin/PFA-fixed paraffin-embedded sections) of human placenta tissue with TXNDC4 polyclonal antibody (Cat # PAB27839). Immunohistochemistry of formalin-fixed, paraffin-embedded tissue after heat-induced antigen retrieval.

- Immunohistochemistry (Formalin/PFA-fixed paraffin-embedded sections)

Immunohistochemistry (Formalin/PFA-fixed paraffin-embedded sections) of human stomach tissue with TXNDC4 polyclonal antibody (Cat # PAB27839). Immunohistochemistry of formalin-fixed, paraffin-embedded tissue after heat-induced antigen retrieval.

Gene Info — TXNDC4

Entrez GeneID	23071
Protein Accession#	Q9BS26
Gene Name	TXNDC4
Gene Alias	ERP44, KIAA0573
Gene Description	thioredoxin domain containing 4 (endoplasmic reticulum)
Omim ID	609170
Gene Ontology	Hyperlink
Other Designations	OTTHUMP00000021788 OTTHUMP00000063799 endoplasmic reticulum resident protein 44 kDa

Disease

- [Cardiovascular Diseases](#)
- [Diabetes Mellitus](#)
- [Edema](#)