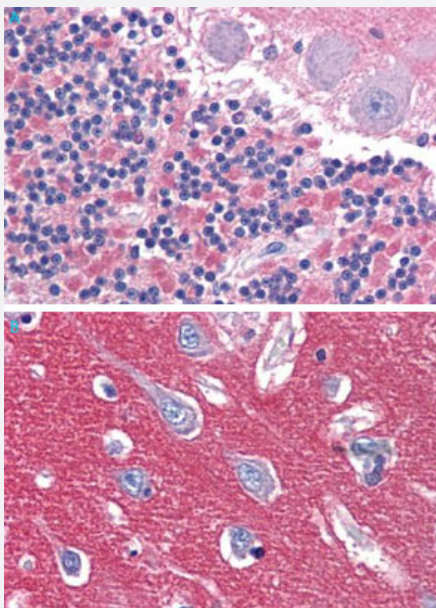


# CADM2 polyclonal antibody

Catalog # PAB27830

Size 50 ug

## Applications



### Immunohistochemistry (Formalin/PFA-fixed paraffin-embedded sections)

Immunohistochemistry (Formalin/PFA-fixed paraffin-embedded sections) of human brain, cerebellum (A) and human brain, cortex (B) with CADM2 polyclonal antibody (Cat # PAB27830). Immunohistochemistry of formalin-fixed, paraffin-embedded tissue after heat-induced antigen retrieval.

## Specification

|                     |  |
|---------------------|--|
| Product Description | Rabbit polyclonal antibody raised against synthetic peptide of CADM2.  |
| Immunogen           | A synthetic peptide corresponding to 17 amino acid at internal region of human CADM2.  |
| Host                | Rabbit   |
| Reactivity          | Bovine, Dog, Guinea pig, Hamster, Horse, Human, Monkey, Mouse, Pig, Rabbit, Rat  |
| Specificity         | BLAST analysis of the peptide immunogen showed no homology with other human proteins.  |
| Form                | Liquid   |
| Purification        | Immunoaffinity chromatography  |
| Recommend Usage     | Immunohistochemistry (Formalin/PFA-fixed paraffin-embedded sections) (2.5 ug/mL)<br>The optimal working dilution should be determined by the end user. |

|                     |  |
|---------------------|--|
| Storage Buffer      | In PBS (0.09% sodium azide)  |
| Storage Instruction | Store at 4°C. For long term storage store at -80°C.<br>Aliquot to avoid repeated freezing and thawing.                 |
| Note                | This product contains sodium azide: a POISONOUS AND HAZARDOUS SUBSTANCE which should be handled by trained staff only. |

## Applications

- Immunohistochemistry (Formalin/PFA-fixed paraffin-embedded sections)

Immunohistochemistry (Formalin/PFA-fixed paraffin-embedded sections) of human brain, cerebellum (A) and human brain, cortex (B) with CADM2 polyclonal antibody (Cat # PAB27830). Immunohistochemistry of formalin-fixed, paraffin-embedded tissue after heat-induced antigen retrieval.

## Gene Info — CADM2

|                    |  |
|--------------------|--|
| Entrez GeneID      | <a href="#">253559</a>   |
| Protein Accession# | <a href="#">Q8N3J6</a>   |
| Gene Name          | CADM2  |
| Gene Alias         | IGSF4D, MGC104534, MGC138341, MGC138343, NECL3, Necl-3, synCAM2  |
| Gene Description   | cell adhesion molecule 2   |
| Omim ID            | <a href="#">609938</a>   |
| Gene Ontology      | <a href="#">Hyperlink</a>  |
| Gene Summary       | Members of the large immunoglobulin (Ig) superfamily, such as IGSF4D, have diverse roles in extracellular recognition and intercellular adhesion (Biederer, 2006 [PubMed 16311015]).[supplied by OMIM] |
| Other Designations | immunoglobulin superfamily, member 4D nectin-like 3 nectin-like protein 3  |

## Disease

- [Colitis](#)
- [Genetic Predisposition to Disease](#)

- [Tobacco Use Disorder](#)