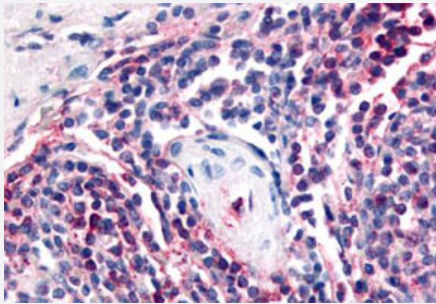


ATRN polyclonal antibody

Catalog # PAB27811

Size 50 ug

Applications



Immunohistochemistry (Formalin/PFA-fixed paraffin-embedded sections)

Immunohistochemistry (Formalin/PFA-fixed paraffin-embedded sections) of human spleen tissue with ATRN polyclonal antibody (Cat # PAB27811). Immunohistochemistry of formalin-fixed, paraffin-embedded tissue after heat-induced antigen retrieval.

Specification

Product Description	Rabbit polyclonal antibody raised against synthetic peptide of ATRN.
Immunogen	A synthetic peptide corresponding to 17 amino acid at internal region of human ATRN.
Host	Rabbit
Reactivity	Bovine, Dog, Hamster, Horse, Human, Monkey, Mouse, Pig, Rabbit, Rat, Zebra fish
Specificity	BLAST analysis of the peptide immunogen showed no homology with other human proteins.
Form	Liquid
Purification	Immunoaffinity chromatography
Recommend Usage	Immunohistochemistry (Formalin/PFA-fixed paraffin-embedded sections) (10 ug/mL) The optimal working dilution should be determined by the end user.
Storage Buffer	In PBS (0.09% sodium azide)
Storage Instruction	Store at 4°C. For long term storage store at -80°C. Aliquot to avoid repeated freezing and thawing.

Note

This product contains sodium azide: a POISONOUS AND HAZARDOUS SUBSTANCE which should be handled by trained staff only.

Applications

- Immunohistochemistry (Formalin/PFA-fixed paraffin-embedded sections)

Immunohistochemistry (Formalin/PFA-fixed paraffin-embedded sections) of human spleen tissue with ATRN polyclonal antibody (Cat # PAB27811). Immunohistochemistry of formalin-fixed, paraffin-embedded tissue after heat-induced antigen retrieval.

Gene Info — ATRN

Entrez GeneID [8455](#)

Protein Accession# [O75882](#)

Gene Name ATRN

Gene Alias DPPT-L, KIAA0548, MGC126754, MGCA

Gene Description attractin

Omim ID [603130](#)

Gene Ontology [Hyperlink](#)

Gene Summary Multiple transcript variants encoding different isoforms exist for this gene. One of the isoforms is a membrane-bound protein with sequence similarity to the mouse mahogany protein, a receptor involved in controlling obesity. The other isoform is a secreted protein involved in the initial immune cell clustering during inflammatory responses that may regulate the chemotactic activity of chemokines. [provided by RefSeq]

Other Designations OTTHUMP00000030102|OTTHUMP00000030103|attractin-2|mahogany protein

Disease

- [Carcinoma](#)
- [Genetic Predisposition to Disease](#)
- [Malignant melanoma](#)
- [Melanoma](#)
- [Skin Neoplasms](#)

- [Tobacco Use Disorder](#)