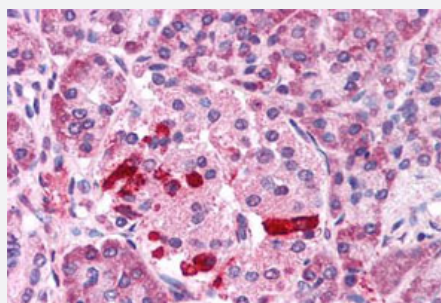


TRPM4 polyclonal antibody

Catalog # PAB27803

Size 50 ug

Applications



Immunohistochemistry (Formalin/PFA-fixed paraffin-embedded sections)

Immunohistochemistry (Formalin/PFA-fixed paraffin-embedded sections) of human pancreas, islet with TRPM4 polyclonal antibody (Cat # PAB27803). Immunohistochemistry of formalin-fixed, paraffin-embedded tissue after heat-induced antigen retrieval.

Specification

Product Description	Rabbit polyclonal antibody raised against synthetic peptide of TRPM4.
Immunogen	A synthetic peptide corresponding to 18 amino acid at C-terminus of human TRPM4.
Host	Rabbit
Reactivity	Human
Specificity	BLAST analysis of the peptide immunogen showed no homology with other human proteins.
Form	Liquid
Purification	Immunoaffinity chromatography
Recommend Usage	Immunohistochemistry (Formalin/PFA-fixed paraffin-embedded sections) (5-7.5 ug/mL) The optimal working dilution should be determined by the end user.
Storage Buffer	In PBS (0.09% sodium azide)
Storage Instruction	Store at 4°C. For long term storage store at -80°C. Aliquot to avoid repeated freezing and thawing.

Note

This product contains sodium azide: a POISONOUS AND HAZARDOUS SUBSTANCE which should be handled by trained staff only.

Applications

- Immunohistochemistry (Formalin/PFA-fixed paraffin-embedded sections)

Immunohistochemistry (Formalin/PFA-fixed paraffin-embedded sections) of human pancreas, islet with TRPM4 polyclonal antibody (Cat # PAB27803). Immunohistochemistry of formalin-fixed, paraffin-embedded tissue after heat-induced antigen retrieval.

Gene Info — TRPM4

Entrez GeneID	54795
---------------	-----------------------

Protein Accession#	Q8TD43
--------------------	------------------------

Gene Name	TRPM4
-----------	-------

Gene Alias	FLJ20041, TRPM4B
------------	------------------

Gene Description	transient receptor potential cation channel, subfamily M, member 4
------------------	--

Omim ID	606936
---------	------------------------

Gene Ontology	Hyperlink
---------------	---------------------------

Gene Summary	subfamily M
--------------	-------------

Other Designations	-
--------------------	---