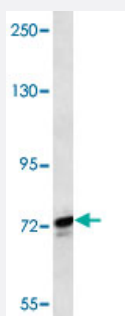


# SCYL1 polyclonal antibody

Catalog # PAB2778

Size 400 uL

## Applications



### Western Blot (Tissue lysate)

Western blot analysis of human placenta tissue lysate (35 ug/lane) with SCYL1 polyclonal antibody (Cat # PAB2778).

## Specification

<b>Product Description</b>	Rabbit polyclonal antibody raised against synthetic peptide of SCYL1.
<b>Immunogen</b>	A synthetic peptide (conjugated with KLH) corresponding to N-terminus of human SCYL1.
<b>Host</b>	Rabbit
<b>Reactivity</b>	Human
<b>Form</b>	Liquid
<b>Purification</b>	Protein A purification
<b>Recommend Usage</b>	Western Blot (1:1000) The optimal working dilution should be determined by the end user.
<b>Storage Buffer</b>	In PBS (0.09% sodium azide)
<b>Storage Instruction</b>	Store at 4°C. For long term storage store at -20°C. Aliquot to avoid repeated freezing and thawing.
<b>Note</b>	This product contains sodium azide: a POISONOUS AND HAZARDOUS SUBSTANCE which should be handled by trained staff only.

## Applications

- Western Blot (Tissue lysate)

Western blot analysis of human placenta tissue lysate (35 ug/lane) with SCYL1 polyclonal antibody (Cat # PAB2778).

## Gene Info — SCYL1

Entrez GeneID	<a href="#">57410</a>
Protein Accession#	<a href="#">NP_065731:Q96KG9</a>
Gene Name	SCYL1
Gene Alias	GKLP, HT019, MGC78454, NKTL, NTKL, P105, TAPK, TEIF, TRAP
Gene Description	SCY1-like 1 (S. cerevisiae)
Omim ID	<a href="#">607982</a>
Gene Ontology	<a href="#">Hyperlink</a>
Gene Summary	This gene encodes a transcriptional regulator belonging to the SCY1-like family of kinase-like proteins. The protein has a divergent N-terminal kinase domain that is thought to be catalytically inactive, and can bind specific DNA sequences through its C-terminal domain. It activates transcription of the telomerase reverse transcriptase and DNA polymerase beta genes. The protein has been localized to the nucleus, and also to the cytoplasm and centrosomes during mitosis. Multiple transcript variants encoding different isoforms have been found for this gene. [provided by RefSeq]
Other Designations	N-terminal kinase-like protein SCY1-like 1 likely ortholog of mouse N-terminal kinase-like protein telomerase regulation-associated protein telomerase transcriptional elements-interacting factor teratoma-associated tyrosine kinase

## Publication Reference

- [Molecular cloning and characterization of a human gene involved in transcriptional regulation of hTERT.](#)

Tang Z, Zhao Y, Mei F, Yang S, Li X, Lv J, Hou L, Zhang B.

Biochemical and Biophysical Research Communications 2004 Nov; 324(4):1324.

Application: IF, WB, Human, HeLa cells

- [Identification and characterization of the human protein kinase-like gene NTKL: mitosis-specific centrosomal localization of an alternatively spliced isoform.](#)

Kato M, Yano K, Morotomi-Yano K, Saito H, Miki Y.

Genomics 2002 Jun; 79(6):760.

Application: IF, WB-Ce, Human, HeLa, MCF-7 cells

- [Cloning and preliminary characterization of a 105 kDa protein with an N-terminal kinase-like domain.](#)

Liu SC, Lane WS, Lienhard GE.

Biochimica et Biophysica Acta 2000 Dec; 1517(1):148.