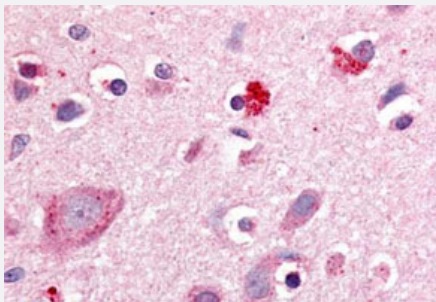


# RORB polyclonal antibody

Catalog # PAB27777

Size 50 ug

## Applications



### Immunohistochemistry (Formalin/PFA-fixed paraffin-embedded sections)

Immunohistochemistry (Formalin/PFA-fixed paraffin-embedded sections) of human brain, cortex with RORB polyclonal antibody (Cat # PAB27777).  
Immunohistochemistry of formalin-fixed, paraffin-embedded tissue after heat-induced antigen retrieval.

## Specification

<b>Product Description</b>	Rabbit polyclonal antibody raised against synthetic peptide of RORB.
<b>Immunogen</b>	A synthetic peptide corresponding to 18 amino acid at hinge domain of human RORB.
<b>Host</b>	Rabbit
<b>Reactivity</b>	Bovine, Chicken, Dog, Hamster, Horse, Human, Monkey, Mouse, Rabbit, Rat, Sheep
<b>Specificity</b>	BLAST analysis of the peptide immunogen showed no homology with other human proteins.
<b>Form</b>	Liquid
<b>Purification</b>	Immunoaffinity chromatography
<b>Recommend Usage</b>	Immunohistochemistry (Formalin/PFA-fixed paraffin-embedded sections) (20 ug/mL) The optimal working dilution should be determined by the end user.
<b>Storage Buffer</b>	In PBS (0.09% sodium azide)
<b>Storage Instruction</b>	Store at 4°C. For long term storage store at -80°C. Aliquot to avoid repeated freezing and thawing.

## Note

This product contains sodium azide: a POISONOUS AND HAZARDOUS SUBSTANCE which should be handled by trained staff only.

## Applications

- Immunohistochemistry (Formalin/PFA-fixed paraffin-embedded sections)

Immunohistochemistry (Formalin/PFA-fixed paraffin-embedded sections) of human brain, cortex with RORB polyclonal antibody (Cat # PAB27777). Immunohistochemistry of formalin-fixed, paraffin-embedded tissue after heat-induced antigen retrieval.

## Gene Info — RORB

Entrez GeneID [6096](#)

Protein Accession# [Q92753](#)

Gene Name RORB

Gene Alias NR1F2, ROR-BETA, RZR-BETA, RZRB, bA133M9.1

Gene Description RAR-related orphan receptor B

Omim ID [601972](#)

Gene Ontology [Hyperlink](#)

**Gene Summary** The protein encoded by this gene is a member of the NR1 subfamily of nuclear hormone receptors. It is a DNA-binding protein that can bind as a monomer or as a homodimer to hormone response elements upstream of several genes to enhance the expression of those genes. The specific functions of this protein are not known, but it has been shown to interact with NM23-2, a nucleoside diphosphate kinase involved in organogenesis and differentiation. [provided by RefSeq]

**Other Designations** OTTHUMP00000021486|RAR-related orphan receptor beta|nuclear receptor RZR-beta|retinoic acid-binding receptor beta|retinoid-related orphan receptor beta

## Disease

- [Bipolar Disorder](#)
- [Disease Models](#)
- [Genetic Predisposition to Disease](#)
- [Psychiatric Status Rating Scales](#)

- [Psychotic Disorders](#)
- [Schizophrenia](#)
- [Tobacco Use Disorder](#)