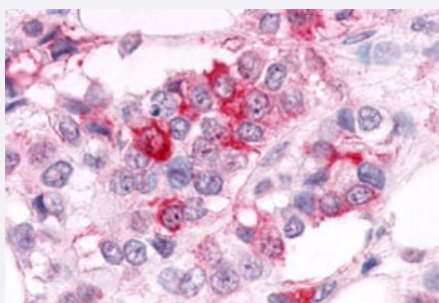


# ESRRA polyclonal antibody

Catalog # PAB27776

Size 50 ug

## Applications



### Immunohistochemistry (Formalin/PFA-fixed paraffin-embedded sections)

Immunohistochemistry (Formalin/PFA-fixed paraffin-embedded sections) of human breast cancer tissue with ESRRA polyclonal antibody (Cat # PAB27776). Immunohistochemistry of formalin-fixed, paraffin-embedded tissue after heat-induced antigen retrieval.

## Specification

|                            |  |
|----------------------------|--|
| <b>Product Description</b> | Rabbit polyclonal antibody raised against synthetic peptide of ESRRA.  |
| <b>Immunogen</b>           | A synthetic peptide corresponding to 15 amino acid at ligand-binding domain of human ESRRA.  |
| <b>Host</b>                | Rabbit   |
| <b>Reactivity</b>          | Bovine, Dog, Hamster, Horse, Human, Monkey, Mouse, Pig, Rat  |
| <b>Specificity</b>         | BLAST analysis of the peptide immunogen showed no homology with other human proteins, except ESRG (60%).   |
| <b>Form</b>                | Liquid   |
| <b>Purification</b>        | Immunoaffinity chromatography  |
| <b>Recommend Usage</b>     | Immunohistochemistry (Formalin/PFA-fixed paraffin-embedded sections) (11-21 ug/mL)<br>The optimal working dilution should be determined by the end user. |
| <b>Storage Buffer</b>      | In PBS (0.09% sodium azide)  |
| <b>Storage Instruction</b> | Store at 4°C. For long term storage store at -80°C.<br>Aliquot to avoid repeated freezing and thawing.   |

**Note**

This product contains sodium azide: a POISONOUS AND HAZARDOUS SUBSTANCE which should be handled by trained staff only.

## Applications

- Immunohistochemistry (Formalin/PFA-fixed paraffin-embedded sections)

Immunohistochemistry (Formalin/PFA-fixed paraffin-embedded sections) of human breast cancer tissue with ESRRRA polyclonal antibody (Cat # PAB27776). Immunohistochemistry of formalin-fixed, paraffin-embedded tissue after heat-induced antigen retrieval.

## Gene Info — ESRRRA

Entrez GeneID [2101](#)

Protein Accession# [P11474](#)

Gene Name ESRRRA

Gene Alias ERR1, ERRa, ERRalpha, ESRL1, NR3B1

Gene Description estrogen-related receptor alpha

Omim ID [601998](#)

Gene Ontology [Hyperlink](#)

**Gene Summary** The protein encoded by this gene is a nuclear receptor that is closely related to the estrogen receptor. This protein acts as a site-specific transcription regulator and has been also shown to interact with estrogen and the transcription factor TFIIIB by direct protein-protein contact. The binding and regulatory activities of this protein have been demonstrated in the regulation of a variety of genes including lactoferrin, osteopontin, medium-chain acyl coenzyme A dehydrogenase (MCAD) and thyroid hormone receptor genes. A processed pseudogene of ESRRRA is located on chromosome 13q12.1. [provided by RefSeq]

**Other Designations** estrogen receptor-like 1

## Disease

- [Cardiovascular Diseases](#)
- [Diabetes Mellitus](#)
- [Edema](#)

- [Genetic Predisposition to Disease](#)
- [Neoplasms](#)
- [Obesity](#)
- [Ovarian cancer](#)
- [Ovarian Neoplasms](#)