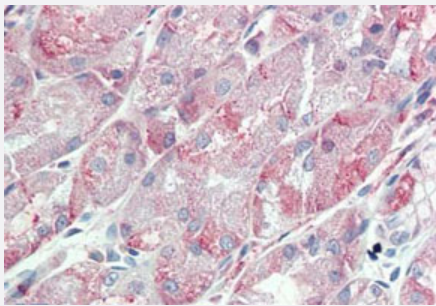


ITGA6 polyclonal antibody

Catalog # PAB27763

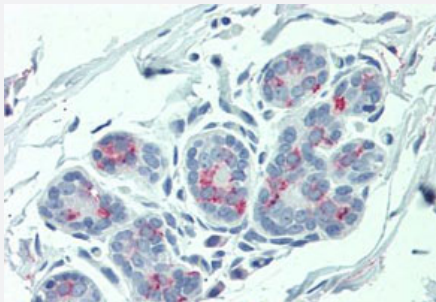
Size 50 ug

Applications



Immunohistochemistry (Formalin/PFA-fixed paraffin-embedded sections)

Immunohistochemistry (Formalin/PFA-fixed paraffin-embedded sections) of human stomach tissue with ITGA6 polyclonal antibody (Cat # PAB27763). Immunohistochemistry of formalin-fixed, paraffin-embedded tissue after heat-induced antigen retrieval.



Immunohistochemistry (Formalin/PFA-fixed paraffin-embedded sections)

Immunohistochemistry (Formalin/PFA-fixed paraffin-embedded sections) of human breast tissue with ITGA6 polyclonal antibody (Cat # PAB27763). Immunohistochemistry of formalin-fixed, paraffin-embedded tissue after heat-induced antigen retrieval.

Specification

Product Description	Rabbit polyclonal antibody raised against synthetic peptide of ITGA6.
Immunogen	A synthetic peptide corresponding to 16 amino acid at internal region of human ITGA6.
Host	Rabbit
Reactivity	Bovine, Dog, Guinea pig, Hamster, Horse, Human, Monkey, Mouse, Rat
Specificity	BLAST analysis of the peptide immunogen showed no homology with other human proteins.
Form	Liquid
Purification	Immunoaffinity chromatography

Recommend Usage	Immunohistochemistry (Formalin/PFA-fixed paraffin-embedded sections) (5 ug/mL) The optimal working dilution should be determined by the end user.
Storage Buffer	In PBS (0.09% sodium azide)
Storage Instruction	Store at 4°C. For long term storage store at -80°C. Aliquot to avoid repeated freezing and thawing.
Note	This product contains sodium azide: a POISONOUS AND HAZARDOUS SUBSTANCE which should be handled by trained staff only.

Applications

- Immunohistochemistry (Formalin/PFA-fixed paraffin-embedded sections)

Immunohistochemistry (Formalin/PFA-fixed paraffin-embedded sections) of human stomach tissue with ITGA6 polyclonal antibody (Cat # PAB27763). Immunohistochemistry of formalin-fixed, paraffin-embedded tissue after heat-induced antigen retrieval.

- Immunohistochemistry (Formalin/PFA-fixed paraffin-embedded sections)

Immunohistochemistry (Formalin/PFA-fixed paraffin-embedded sections) of human breast tissue with ITGA6 polyclonal antibody (Cat # PAB27763). Immunohistochemistry of formalin-fixed, paraffin-embedded tissue after heat-induced antigen retrieval.

Gene Info — ITGA6

Entrez GeneID	3655
Protein Accession#	P23229
Gene Name	ITGA6
Gene Alias	CD49f, DKFZp686J01244, FLJ18737, ITGA6B, VLA-6
Gene Description	integrin, alpha 6
Omim ID	147556 226730
Gene Ontology	Hyperlink
Gene Summary	The ITGA6 protein product is the integrin alpha chain alpha 6. Integrins are integral cell-surface proteins composed of an alpha chain and a beta chain. A given chain may combine with multiple partners resulting in different integrins. For example, alpha 6 may combine with beta 4 in the integrin referred to as TSP180, or with beta 1 in the integrin VLA-6. Integrins are known to participate in cell adhesion as well as cell-surface mediated signalling. Two transcript variants encoding different isoforms have been found for this gene. [provided by RefSeq]

Other Designations

integrin alpha chain, alpha 6|integrin alpha6B

Pathway

- [Arrhythmogenic right ventricular cardiomyopathy \(ARVC\)](#)
- [Cell adhesion molecules \(CAMs\)](#)
- [ECM-receptor interaction](#)
- [Focal adhesion](#)
- [Hematopoietic cell lineage](#)
- [Hypertrophic cardiomyopathy \(HCM\)](#)
- [Pathways in cancer](#)
- [Regulation of actin cytoskeleton](#)
- [Small cell lung cancer](#)

Disease

- [Breast cancer](#)
- [Breast Neoplasms](#)
- [Coronary Artery Disease](#)
- [Disease Susceptibility](#)
- [Genetic Predisposition to Disease](#)
- [Ovarian Neoplasms](#)
- [Prostatic Neoplasms](#)