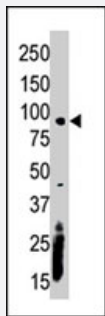


CASK polyclonal antibody

Catalog # PAB2776

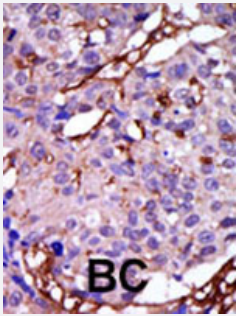
Size 400 uL

Applications



Western Blot (Tissue lysate)

Western blot analysis of CASK polyclonal antibody (Cat # PAB2776) in mouse kidney lysate. CASK (arrow) was detected using purified polyclonal. Secondary HRP-anti-rabbit was used for signal visualization with chemiluminescence.



Immunohistochemistry (Formalin/PFA-fixed paraffin-embedded sections)

Formalin-fixed and paraffin-embedded human cancer tissue reacted with CASK polyclonal antibody (Cat # PAB2776), which was peroxidase-conjugated to the secondary antibody, followed by DAB staining. This data demonstrates the use of this antibody for immunohistochemistry; clinical relevance has not been evaluated. BC = breast carcinoma.

Specification

Product Description	Rabbit polyclonal antibody raised against synthetic peptide of CASK.
Immunogen	A synthetic peptide (conjugated with KLH) corresponding to C-terminus of human CASK.
Host	Rabbit
Reactivity	Human, Mouse
Form	Liquid
Purification	Protein G purification

Recommend Usage	Western Blot (1:1000) Immunohistochemistry (1:50-100) The optimal working dilution should be determined by the end user.
Storage Buffer	In PBS (0.09% sodium azide)
Storage Instruction	Store at 4°C. For long term storage store at -20°C. Aliquot to avoid repeated freezing and thawing.
Note	This product contains sodium azide: a POISONOUS AND HAZARDOUS SUBSTANCE which should be handled by trained staff only.

Applications

- Western Blot (Tissue lysate)

Western blot analysis of CASK polyclonal antibody (Cat # PAB2776) in mouse kidney lysate. CASK (arrow) was detected using purified polyclonal. Secondary HRP-anti-rabbit was used for signal visualization with chemiluminescence.

- Immunohistochemistry (Formalin/PFA-fixed paraffin-embedded sections)

Formalin-fixed and paraffin-embedded human cancer tissue reacted with CASK polyclonal antibody (Cat # PAB2776), which was peroxidase-conjugated to the secondary antibody, followed by DAB staining. This data demonstrates the use of this antibody for immunohistochemistry; clinical relevance has not been evaluated. BC = breast carcinoma.

Gene Info — CASK

Entrez GeneID	8573
Protein Accession#	NP_003679;O14936
Gene Name	CASK
Gene Alias	CAGH39, CMG, FLJ22219, FLJ31914, LIN2, MICPCH, TNRC8
Gene Description	calcium/calmodulin-dependent serine protein kinase (MAGUK family)
Omim ID	300172
Gene Ontology	Hyperlink
Gene Summary	The CASK gene encodes a calcium/calmodulin-dependent serine protein kinase that is a member of the membrane-associated guanylate kinase (MAGUK) protein family. MAGUKs are scaffolding proteins associated with intercellular junctions (Atasoy et al., 2007 [PubMed 17287346]).[supplied by OMIM]
Other Designations	CAMGUK protein calcium/calmodulin-dependent serine protein kinase membrane-associated guanylate kinase trinucleotide repeat containing 8

Publication Reference

- [Mapping and expression analysis of the human CASK gene.](#)

Stevenson D, Lavery HG, Wenwieser S, Douglas M, Wilson JB.

Mammalian Genome 2000 Oct; 11(10):934.

- [Human CASK/LIN-2 binds syndecan-2 and protein 4.1 and localizes to the basolateral membrane of epithelial cells.](#)

Cohen AR, Woods DF, Marfatia SM, Walther Z, Chishti AH, Anderson JM.

The Journal of Cell Biology 1998 Jul; 142(1):129.

Application: IF, WB-Ti, Rat, Liver, Kidney

- [Crystal structure of the hCASK PDZ domain reveals the structural basis of class II PDZ domain target recognition.](#)

Daniels DL, Cohen AR, Anderson JM, Brunger AT.

Nature Structural Biology 1998 Apr; 5(4):317.

Pathway

- [Tight junction](#)

Disease

- [Autistic Disorder](#)
- [Mental Retardation](#)
- [Psychotic Disorders](#)
- [Schizophrenia](#)