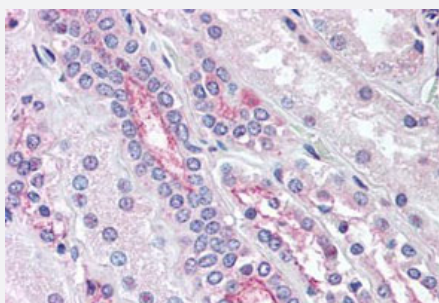


# KCNE3 polyclonal antibody

Catalog # PAB27754

Size 50 ug

## Applications



### Immunohistochemistry (Formalin/PFA-fixed paraffin-embedded sections)

Immunohistochemistry (Formalin/PFA-fixed paraffin-embedded sections) of human kidney tissue with KCNE3 polyclonal antibody (Cat # PAB27754). Immunohistochemistry of formalin-fixed, paraffin-embedded tissue after heat-induced antigen retrieval.

## Specification

<b>Product Description</b>	Rabbit polyclonal antibody raised against synthetic peptide of KCNE3.
<b>Immunogen</b>	A synthetic peptide corresponding to 14 amino acid at internal region of human KCNE3.
<b>Host</b>	Rabbit
<b>Reactivity</b>	Bovine, Chicken, Dog, Hamster, Horse, Human, Mouse, Pig, Rabbit, Rat
<b>Specificity</b>	BLAST analysis of the peptide immunogen showed no homology with other human proteins.
<b>Form</b>	Liquid
<b>Purification</b>	Immunoaffinity chromatography
<b>Recommend Usage</b>	Immunohistochemistry (Formalin/PFA-fixed paraffin-embedded sections) (10-20 ug/mL) The optimal working dilution should be determined by the end user.
<b>Storage Buffer</b>	In PBS (0.09% sodium azide)
<b>Storage Instruction</b>	Store at 4°C. For long term storage store at -80°C. Aliquot to avoid repeated freezing and thawing.

## Note

This product contains sodium azide: a POISONOUS AND HAZARDOUS SUBSTANCE which should be handled by trained staff only.

## Applications

- Immunohistochemistry (Formalin/PFA-fixed paraffin-embedded sections)

Immunohistochemistry (Formalin/PFA-fixed paraffin-embedded sections) of human kidney tissue with KCNE3 polyclonal antibody (Cat # PAB27754). Immunohistochemistry of formalin-fixed, paraffin-embedded tissue after heat-induced antigen retrieval.

## Gene Info — KCNE3

Entrez GeneID [10008](#)

Protein Accession# [Q9Y6H6](#)

Gene Name KCNE3

Gene Alias DKFZp781H21101, HOKPP, MGC102685, MGC129924, MiRP2

Gene Description potassium voltage-gated channel, Isk-related family, member 3

Omim ID [170400 604433](#)

Gene Ontology [Hyperlink](#)

**Gene Summary** Voltage-gated potassium (Kv) channels represent the most complex class of voltage-gated ion channels from both functional and structural standpoints. Their diverse functions include regulating neurotransmitter release, heart rate, insulin secretion, neuronal excitability, epithelial electrolyte transport, smooth muscle contraction, and cell volume. This gene encodes a member of the potassium channel, voltage-gated, Isk-related subfamily. This member is a type I membrane protein, and a beta subunit that assembles with a potassium channel alpha-subunit to modulate the gating kinetics and enhance stability of the multimeric complex. This gene is prominently expressed in the kidney. A missense mutation in this gene is associated with hypokalemic periodic paralysis. [provided by RefSeq]

**Other Designations** cardiac voltage-gated potassium channel accessory subunit|minK-related peptide 2|minimum potassium ion channel-related peptide 2|potassium voltage-gated channel subfamily E member 3|voltage-gated K<sup>+</sup> channel subunit MIRP2

## Disease

- [Cardiovascular Diseases](#)

- [Diabetes Mellitus](#)
- [Edema](#)
- [Hypokalemic Periodic Paralysis](#)
- [Long QT syndrome](#)
- [Meniere Disease](#)
- [Paralyses](#)
- [Paralysis](#)
- [Thyrotoxicosis](#)