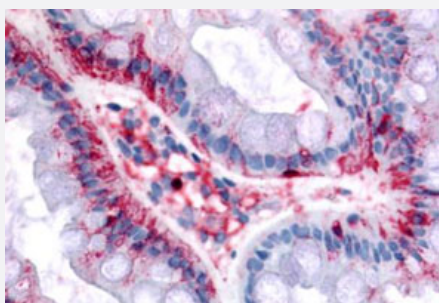


BEST4 polyclonal antibody

Catalog # PAB27739

Size 50 ug

Applications



Immunohistochemistry (Formalin/PFA-fixed paraffin-embedded sections)

Immunohistochemistry (Formalin/PFA-fixed paraffin-embedded sections) of human colon tissue with BEST4 polyclonal antibody (Cat # PAB27739). Immunohistochemistry of formalin-fixed, paraffin-embedded tissue after heat-induced antigen retrieval.

Specification

Product Description	Rabbit polyclonal antibody raised against synthetic peptide of BEST4.
Immunogen	A synthetic peptide corresponding to 18 amino acid at internal region of human BEST4.
Host	Rabbit
Reactivity	Bovine, Human, Pig, Rabbit
Specificity	BLAST analysis of the peptide immunogen showed no homology with other human proteins.
Form	Liquid
Purification	Immunoaffinity chromatography
Recommend Usage	Immunohistochemistry (Formalin/PFA-fixed paraffin-embedded sections) (2.5 ug/mL) The optimal working dilution should be determined by the end user.
Storage Buffer	In PBS (0.09% sodium azide)
Storage Instruction	Store at 4°C. For long term storage store at -80°C. Aliquot to avoid repeated freezing and thawing.

Note

This product contains sodium azide: a POISONOUS AND HAZARDOUS SUBSTANCE which should be handled by trained staff only.

Applications

- Immunohistochemistry (Formalin/PFA-fixed paraffin-embedded sections)

Immunohistochemistry (Formalin/PFA-fixed paraffin-embedded sections) of human colon tissue with BEST4 polyclonal antibody (Cat # PAB27739). Immunohistochemistry of formalin-fixed, paraffin-embedded tissue after heat-induced antigen retrieval.

Gene Info — BEST4

Entrez GeneID [266675](#)

Protein Accession# [Q8NFU0](#)

Gene Name BEST4

Gene Alias MGC126872, VMD2L2

Gene Description bestrophin 4

Omim ID [607336](#)

Gene Ontology [Hyperlink](#)

Gene Summary This gene is a member of the bestrophin gene family of anion channels. Bestrophin genes share a similar gene structure with highly conserved exon-intron boundaries, but with distinct 3' ends. Bestrophins are transmembrane proteins that contain a homologous region rich in aromatic residues, including an invariant arg-phe-pro motif. Mutation in one of the family members (bestrophin 1) is associated with vitelliform macular dystrophy. The bestrophin 4 gene is predominantly expressed in the colon. [provided by RefSeq]

Other Designations OTTHUMP00000010157|vitelliform macular dystrophy 2-like 2