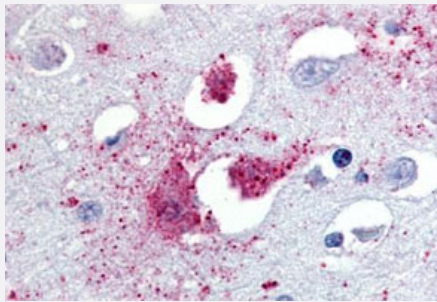


TAAR1 polyclonal antibody

Catalog # PAB27729

Size 50 ug

Applications



Immunohistochemistry (Formalin/PFA-fixed paraffin-embedded sections)

Immunohistochemistry (Formalin/PFA-fixed paraffin-embedded sections) of human brain, amygdala with TAAR1 polyclonal antibody (Cat # PAB27729). Immunohistochemistry of formalin-fixed, paraffin-embedded tissue after heat-induced antigen retrieval.

Specification

Product Description	Rabbit polyclonal antibody raised against synthetic peptide of TAAR1.
Immunogen	A synthetic peptide corresponding to 16 amino acid at N-terminus of human TAAR1.
Host	Rabbit
Reactivity	Human, Monkey
Specificity	BLAST analysis of the peptide immunogen showed no homology with other human proteins.
Form	Liquid
Purification	Immunoaffinity chromatography
Recommend Usage	Immunohistochemistry (Formalin/PFA-fixed paraffin-embedded sections) (1.3 ug/mL) The optimal working dilution should be determined by the end user.
Storage Buffer	In PBS (0.09% sodium azide)
Storage Instruction	Store at 4°C. For long term storage store at -80°C. Aliquot to avoid repeated freezing and thawing.

Note

This product contains sodium azide: a POISONOUS AND HAZARDOUS SUBSTANCE which should be handled by trained staff only.

Applications

- Immunohistochemistry (Formalin/PFA-fixed paraffin-embedded sections)

Immunohistochemistry (Formalin/PFA-fixed paraffin-embedded sections) of human brain, amygdala with TAAR1 polyclonal antibody (Cat # PAB27729). Immunohistochemistry of formalin-fixed, paraffin-embedded tissue after heat-induced antigen retrieval.

Gene Info — TAAR1

Entrez GeneID	134864
---------------	------------------------

Protein Accession#	Q96RJ0
--------------------	------------------------

Gene Name	TAAR1
-----------	-------

Gene Alias	MGC126874, MGC138399, RP11-295F4.9, TA1, TAR1, TRAR1
------------	--

Gene Description	trace amine associated receptor 1
------------------	-----------------------------------

Omim ID	609333
---------	------------------------

Gene Ontology	Hyperlink
---------------	---------------------------

Gene Summary	TAAR1 is a G protein-coupled receptor activated by trace amines. Trace amines are endogenous amine compounds that account for less than 1% of the biogenic amines in most brain regions (Bunzow et al., 2001 [PubMed 11723224]).[supplied by OMIM]
--------------	--

Other Designations	OTTHUMP00000017224 trace amine receptor 1
--------------------	---

Pathway

- [Neuroactive ligand-receptor interaction](#)