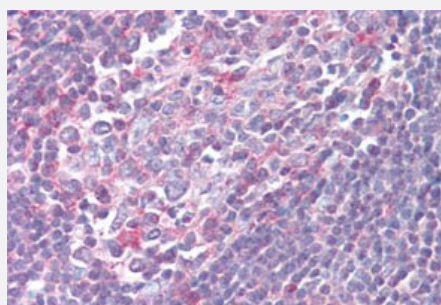


XCR1 polyclonal antibody

Catalog # PAB27725

Size 50 ug

Applications



Immunohistochemistry (Formalin/PFA-fixed paraffin-embedded sections)

Immunohistochemistry (Formalin/PFA-fixed paraffin-embedded sections) of human tonsil tissue with XCR1 polyclonal antibody (Cat # PAB27725). Immunohistochemistry of formalin-fixed, paraffin-embedded tissue after heat-induced antigen retrieval.

Specification

Product Description	Rabbit polyclonal antibody raised against synthetic peptide of XCR1.
Immunogen	A synthetic peptide corresponding to 19 amino acid at cytoplasmic domain of human XCR1.
Host	Rabbit
Reactivity	Human, Monkey
Specificity	BLAST analysis of the peptide immunogen showed no homology with other human proteins.
Form	Liquid
Purification	Immunoaffinity chromatography
Recommend Usage	Immunohistochemistry (Formalin/PFA-fixed paraffin-embedded sections) (5 ug/mL) The optimal working dilution should be determined by the end user.
Storage Buffer	In PBS (0.09% sodium azide)
Storage Instruction	Store at 4°C. For long term storage store at -80°C. Aliquot to avoid repeated freezing and thawing.

Note

This product contains sodium azide: a POISONOUS AND HAZARDOUS SUBSTANCE which should be handled by trained staff only.

Applications

- Immunohistochemistry (Formalin/PFA-fixed paraffin-embedded sections)

Immunohistochemistry (Formalin/PFA-fixed paraffin-embedded sections) of human tonsil tissue with XCR1 polyclonal antibody (Cat # PAB27725). Immunohistochemistry of formalin-fixed, paraffin-embedded tissue after heat-induced antigen retrieval.

Gene Info — XCR1

Entrez GeneID [2829](#)

Protein Accession# [P46094](#)

Gene Name XCR1

Gene Alias CCXCR1, GPR5

Gene Description chemokine (C motif) receptor 1

Omim ID [600552](#)

Gene Ontology [Hyperlink](#)

Gene Summary The protein encoded by this gene is a chemokine receptor belonging to the G protein-coupled receptor superfamily. The family members are characterized by the presence of 7 transmembrane domains and numerous conserved amino acids. This receptor is most closely related to RBS11 and the MIP1-alpha/RANTES receptor. It transduces a signal by increasing the intracellular calcium ions level. The viral macrophage inflammatory protein-II is an antagonist of this receptor and blocks signaling. Two alternatively spliced transcript variants encoding the same protein have been found for this gene. [provided by RefSeq]

Other Designations G protein-coupled receptor 5|XC chemokine receptor 1|chemokine (C motif) XC receptor 1|lymphotactin receptor

Pathway

- [Chemokine signaling pathway](#)
- [Cytokine-cytokine receptor interaction](#)

Disease

- [Rhinitis](#)